

Laminate Island & Overhang

Frameless Cabinets

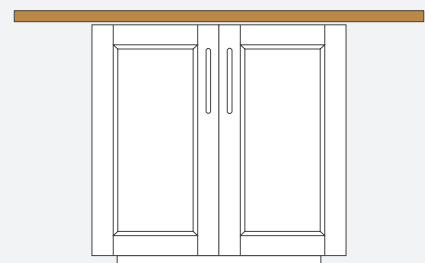
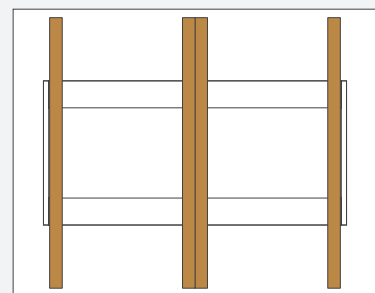
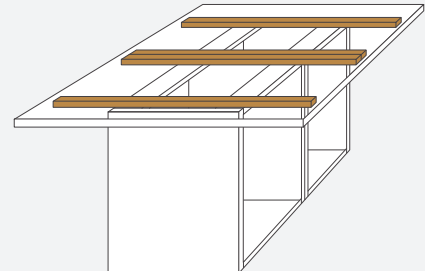
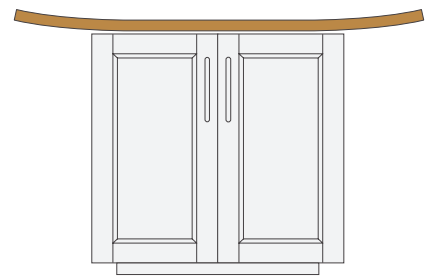
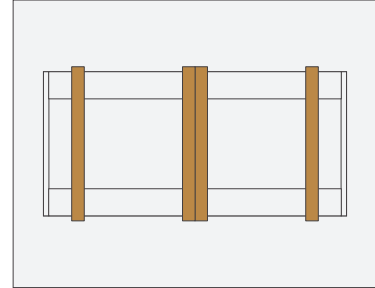
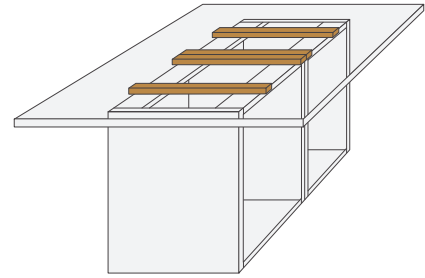
IMPORTANT: Build-up strips need to go from the back build-down strip to the front build-down strip (or full length between build-down strips on island tops). Extended length build-up strips can be made from 3/4" plywood, 3/4" particleboard or 1x lumber.

1. Check to see if the cabinets are level. Adjust the cabinets if possible, shims may be required later if cabinets cannot be adjusted.
2. Measure the width of the build-down stick next to the end cap located on the underside of the countertop.
3. Measure in from the end of the cabinet the distance of the build-down stick plus 1/4" and mark (Fig 3). Pre-drill the front and back of the build-up strip where it will fasten to the cabinets. Then pre-drill additional holes every 6"– 8" in the middle of the build-up strips for screw installation into the bottom of the countertop. Ensure that there are 2–3 screws in the section that will overhang. Install using 1–1/4" drywall screws at marked spots.
4. Install build-up strip on either side of the joint where two cabinets meet up making sure to leave room for countertop installation screws from the bottom into the countertop
5. When installing build-up strips on sink base, measure the opening for the sink to verify that the build-up strip is installed far enough away not to impede the installation of the sink.
6. Place countertop in place and fasten using 3 1–1/4" black drywall screws through each of the build-up strips (using longer screws will result in puncturing the surface of the countertop). If build-up strip crosses 2 cabinets on an island, 3 screws should be used inside each cabinet into the countertop. Shims may be required if the cabinets are not level. Weight or pressure may need to be applied to countertop when screwing down countertops.

NOTE: Any island or countertop with overhang needs support the full width between build-down strips.

NOTE: Any countertop exceeding 15" overhang will require additional support to the floor.

NOTE: Do not place anchoring posts in front of sink.



Laminate Island & Overhang

Standard Cabinets

IMPORTANT: Build-up strips need to go from the back build-down strip to the front build-down strip (or full length between build-down strips on island tops). Extended length build-up strips can be made from 3/4" plywood, 3/4" particleboard or 1x lumber.

1. Check to see if the cabinets are level. Adjust the cabinets if possible, shims may be required later if cabinets cannot be adjusted.
2. Pre-drill holes in the front and back of build-up strip approximately every 6"– 8". Ensure that there are 2–3 screws in the section that will overhang. Place build-up strips every two feet of the cabinet run. Make sure to place the first and last strip 2" from the end of the cabinet run to offset the build down for any end caps. Attach strips to the top of the cabinets face and back frame using 1-1/4" drywall screws.
3. When installing build-up strips on sink base, measure the opening for the sink to verify that the build-up strip is installed far enough away not to impede the installation of the sink.
4. Place countertop in place and fasten using 3 1-1/4" black drywall screws through each of the build-up strips (using longer screws will result in puncturing the surface of the countertop). If build-up strip crosses 2 cabinets on an island, 3 screws should be used inside each cabinet into the countertop. Shims may be required if the cabinets are not level. Weight or pressure may need to be applied to countertop when screwing down countertops.

NOTE: Any island or countertop with overhang needs support the full width between build-down strips.

NOTE: Any countertop exceeding 15" overhang will require additional support to the floor.

NOTE: Do not place anchoring posts in front of sink.

