

# Quartz Chip Repair Kit

## Chip Repair Kit

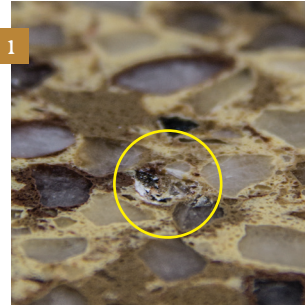
Resin  
Activator

## Additional Materials Required

Window Cleaner  
Clean Soft Cloth  
Razor Blade  
Making Tape

## Top Of Countertop

1. Clean and Dry the area to be filled with window cleaner. Ensure that the area is completely dry before moving to step 2. (Fig 1)
2. Apply one spray of activator (included) to the area being filled. (Fig 2)
3. Apply one spray of activator (included) to the area being filled. (Fig 3)
4. Spray the area with one additional spray of activator. (Fig 4)
5. Pop any air pockets within the resin if necessary. (Fig 5)
6. Wait approximately 2 minutes for the resin to harden.
7. Hold the razor blade horizontal to the surface and scrape back and forth until area is smooth. (Fig 6)
8. Clean with window cleaner. (Fig 7)
9. Repeat the process until the area is completely filled and level with the surface of the countertop. (Fig 8)



# Edge Of Countertop

1. Clean and Dry the area to be filled with window cleaner. Ensure that the area is completely dry before moving to step 2. (Fig 1)

Place masking tape just below the chip location. (Fig 2)

Apply one spray of activator (included) to the area being filled. (Fig 3)

Fill the area with resin (included). (Fig 4)

Spray the area with one additional spray of activator. (Fig 5)

Pop any air pockets within the resin if necessary. (Fig 6)

Wait approximately 2 minutes for the resin to harden.

Hold the razor blade horizontal to the surface and scrape back and forth until area is smooth. (Fig 7)

Clean with window cleaner. (Fig 8)

Repeat the process until the area is completely filled and level with the surface of the countertop. (Fig 9)

