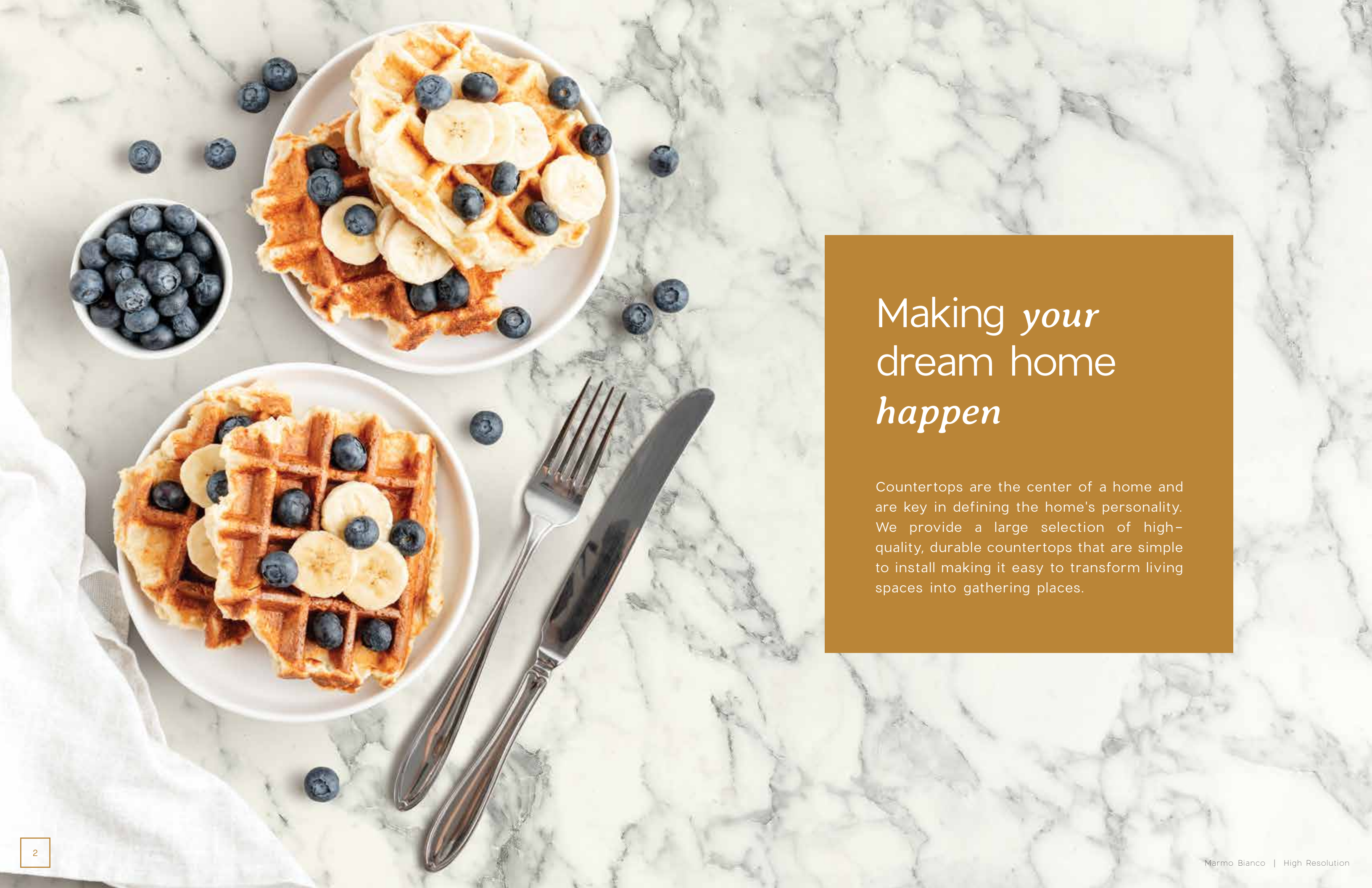


CUSTOMCRAFT  
COUNTERTOPS



# Making *your* dream home *happen*

Countertops are the center of a home and are key in defining the home's personality. We provide a large selection of high-quality, durable countertops that are simple to install making it easy to transform living spaces into gathering places.



# Contents

Overview

ÜCRĒATĒ®..... 6-7

Advantages Of CustomCraft Countertops® ... 8-9

Materials & Colors..... 10-11

Quartz

Benefits Of Quartz ..... 12-13

Color Portfolio..... 14-29

Edge Profiles & End Finishes ..... 30-31

Sink Selections..... 32-41

Solid Surface

Benefits Of Solid Surface ..... 42-43

Color Portfolio..... 44-57

Edge Profiles & End Finishes ..... 58-59

Sink Selections..... 60-69

Laminate

Benefits Of Laminate ..... 70-71

High Resolution Info ..... 72-73

Standard Laminate Info ..... 74-75

High Resolution Laminate Portfolio ..... 76-81

Standard Laminate Portfolio..... 82-91

Edge Profiles & End Finishes ..... 92-93

Sink Selections..... 94-101

In-Stock  
Laminate

About In-Stock Laminate..... 102-103

Color Portfolio..... 104-107

Available Options ..... 108-109

Design & Buy

Templating ..... 110

Installation Guides ..... 111

Measuring Guidelines..... 112-113

Sketching Your Countertops ..... 114-115





## Design Your Dream Kitchen At Home Today!

Design your countertop layout today — from the comfort of your home! As you design, ŪCRĚATĚ® automatically estimates the price and makes a shopping list for you. Save your designs by creating a ŪCRĚATĚ® account, this way you can come and go at your leisure. Purchase your CustomCraft Countertops® directly online or by visiting your local **MENARDS**.

- Pricing as you design
- Create an account to save multiple designs
- Design program available 24/7
- Chat available for assistance

# Advantage Of CustomCraft Countertops®

Nothing defines your kitchen or bath more than its countertops. Whether you are looking for elegant curves or clean lines, our textures and rich colors all combine to accentuate your living space. With CustomCraft Countertops® you can design a countertop that not only fits your lifestyle, but has a personality as distinctive as your own.

## Fast lead time

Approximately 14 days from order to delivery

## Wide variety of material and color options

- Quartz
- Solid Surface
- High Resolution Laminate
- Standard Laminate

## Installation kits available

All the materials you need to get the job done.

## Take home color samples available

Compare colors easily — choose with confidence.

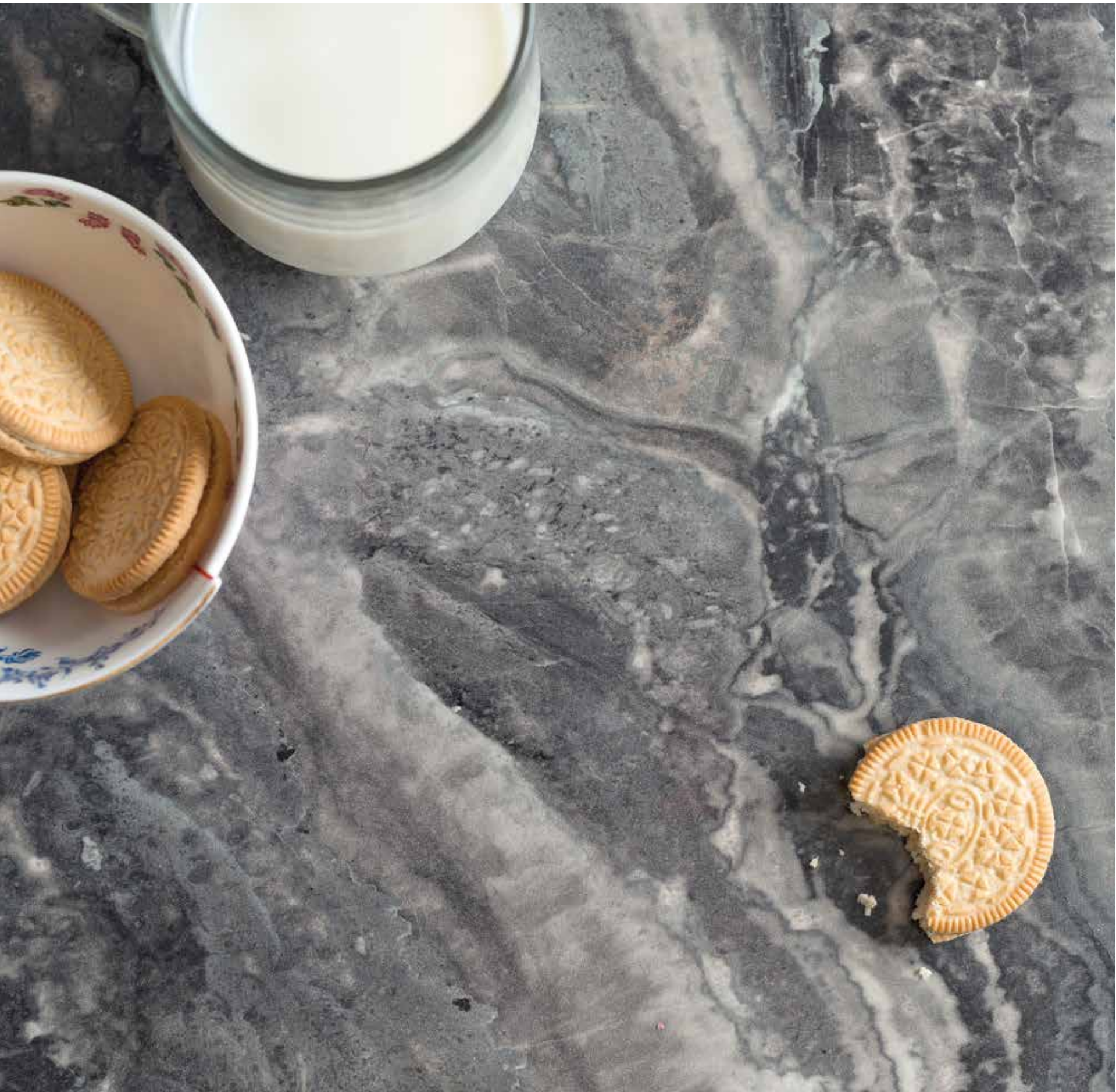
## Countertops templates

A full size vinyl rendering that allows you to verify countertop design and measurements.

## Free design services

Team Members available during all business hours or design online 24/7.





# Material & Color

What surface will work best for you? We have a countertop that matches your lifestyle and budget. Our options include Quartz, Solid Surface, High Resolution Laminate and Standard Laminate so you are sure to find a surface that is just right.

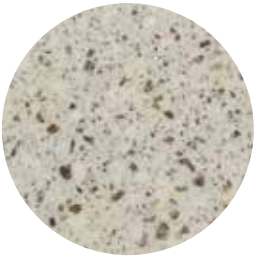
Samples and take home boards are available to aid in the decision process.

For additional information scan the QR codes.



### Quartz

- 18 colors
- Stain resistant
- Non-porous
- Durable
- Fast 14 day lead time
- Limited lifetime warranty



### Solid Surface

- 18 vibrant colors
- Renewable & repairable
- Stain resistant
- Non-porous
- Fast 14 day lead time
- 15 year limited warranty



### High Resolution Laminate

- Over 50 colors to choose from
- Texture Options
- Fast 14 day lead time
- 1 year limited warranty



### Standard Laminate

- Over 90 colors to choose from
- Fast 14 day lead time
- 1 year limited warranty



# Quartz Countertops

## Benefits Of Quartz

Nothing can compare to the modern elegance, rich colors and patterns, and the incredibly durable surface offered by CustomCraft Countertops® Quartz. Quartz countertops are the perfect mix of natural and manufactured materials designed to stand the tests of time. The highly impact resistant material offers easy, care-free maintenance even in the busiest settings. With 18 artfully curated colors to choose from, there is sure to be something to fit every lifestyle.



Stain Resistant



Non-Porous



Durable



Fast 14 Day  
Lead Time

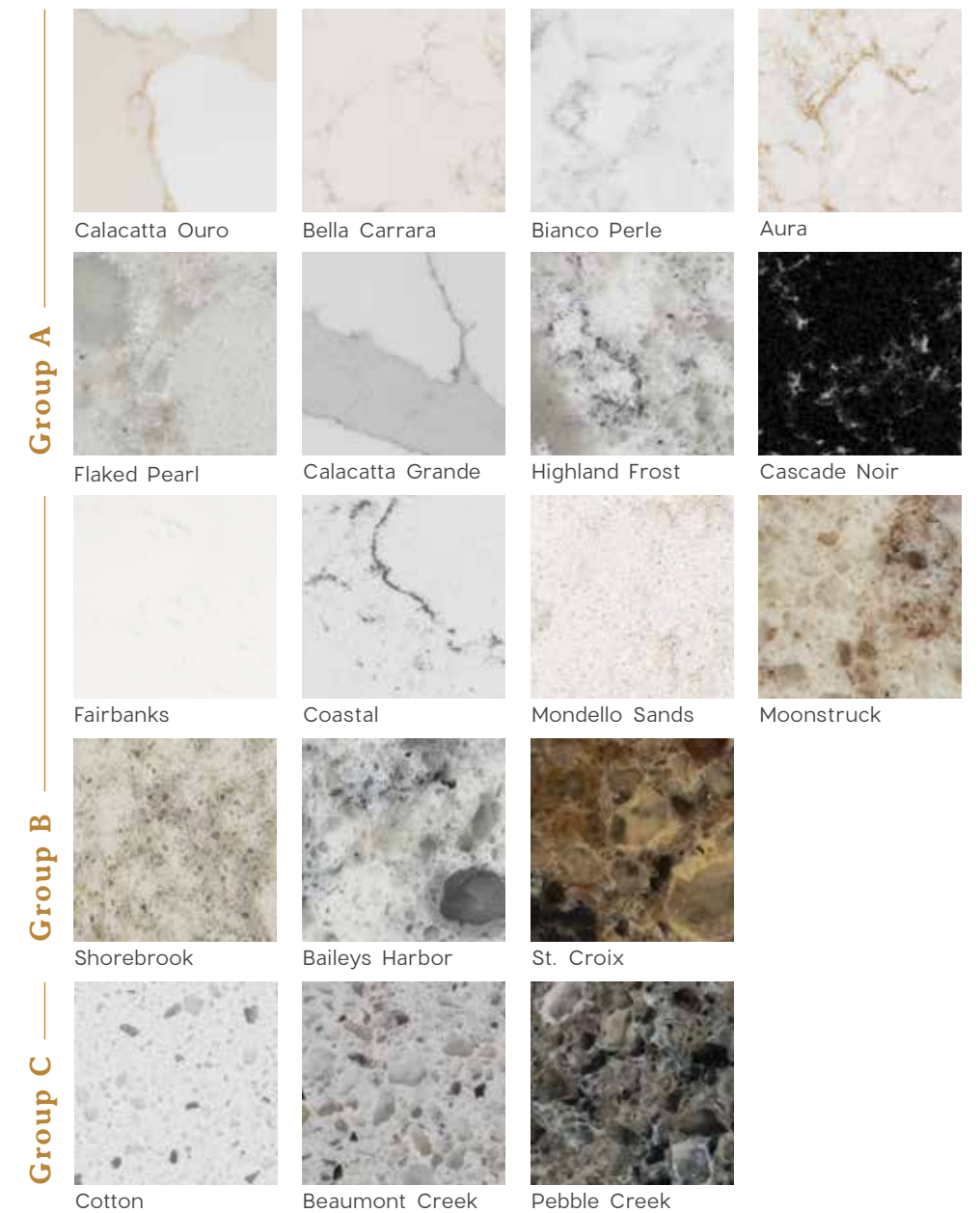


Limited Lifetime  
Warranty

	QUARTZ	GRANITE	MARBLE
Stain Resistant	● ● ● ● ●	● ●	●
Scratch Resistant	● ● ● ● ●	● ● ● ● ●	●
Seamless Appearance	● ● ● ●	● ●	● ●
Non-Porous	● ● ● ● ●	● ● ●	● ●
Easy Care & Maintenance	● ● ● ● ●	● ● ●	● ●
Food Prep Safe	Yes	No	No
Warranty	Limited Lifetime	Varies	Varies
Best	● ● ● ● ●	Better	● ● ● ●
Good	● ● ●	Fair	● ●
Poor	●		



# Color Selection





**Calacatta Ouro** Group A

A warm white backdrop features bold golden-toned veining.



**Bella Carrara** Group A

Opaque white background with elegant veining in tones of pewter and brown.



**Bianco Perle** Group A

Creamy white background with warm gray veins, reminiscent of natural marble.



**Bella Carrara** Group A



**Flaked Pearl** Group A



NEW



**Aura** Group A

Swirls of sparkling gold throughout a white and gray background.



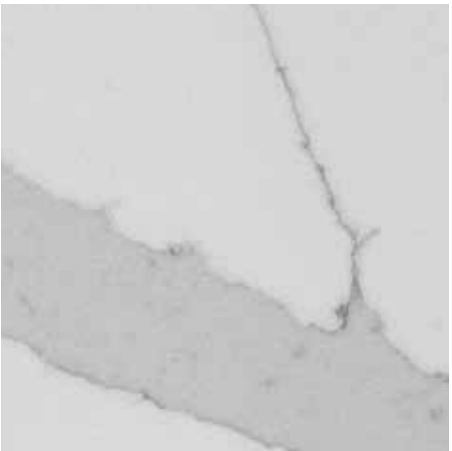
**Flaked Pearl** Group A

Muted gray, silver, and taupe accents contrast the milky white and cream background.



**Calacatta Grande** Group A

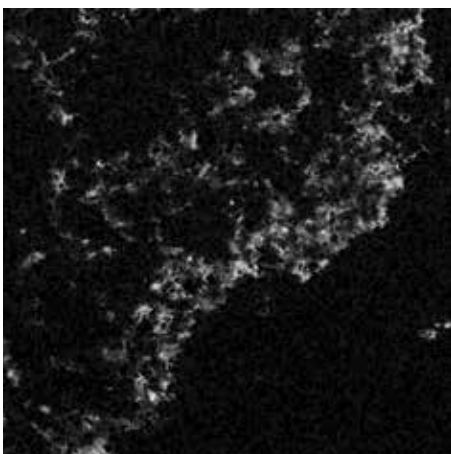
A muted gray and silver tone and white to create natural veining.





**Highland Frost** Group A

Swirls of soft white and taupe with dark grey veining and an eye catching sparkle.

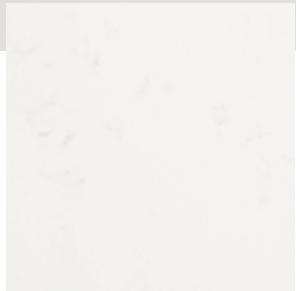


**Cascade Noir** Group A

Graceful soft white veining accents a rich black background creating a look reminiscent of marble.



**Cascade Noir** Group A



**Fairbanks** Group B



**Fairbanks** Group B

Bright white background speckled with wispy warm gray veining.



**Coastal** Group B

A warm white base color with dark and light gray veining.



**Mondello Sands** Group B

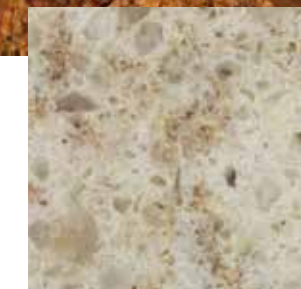
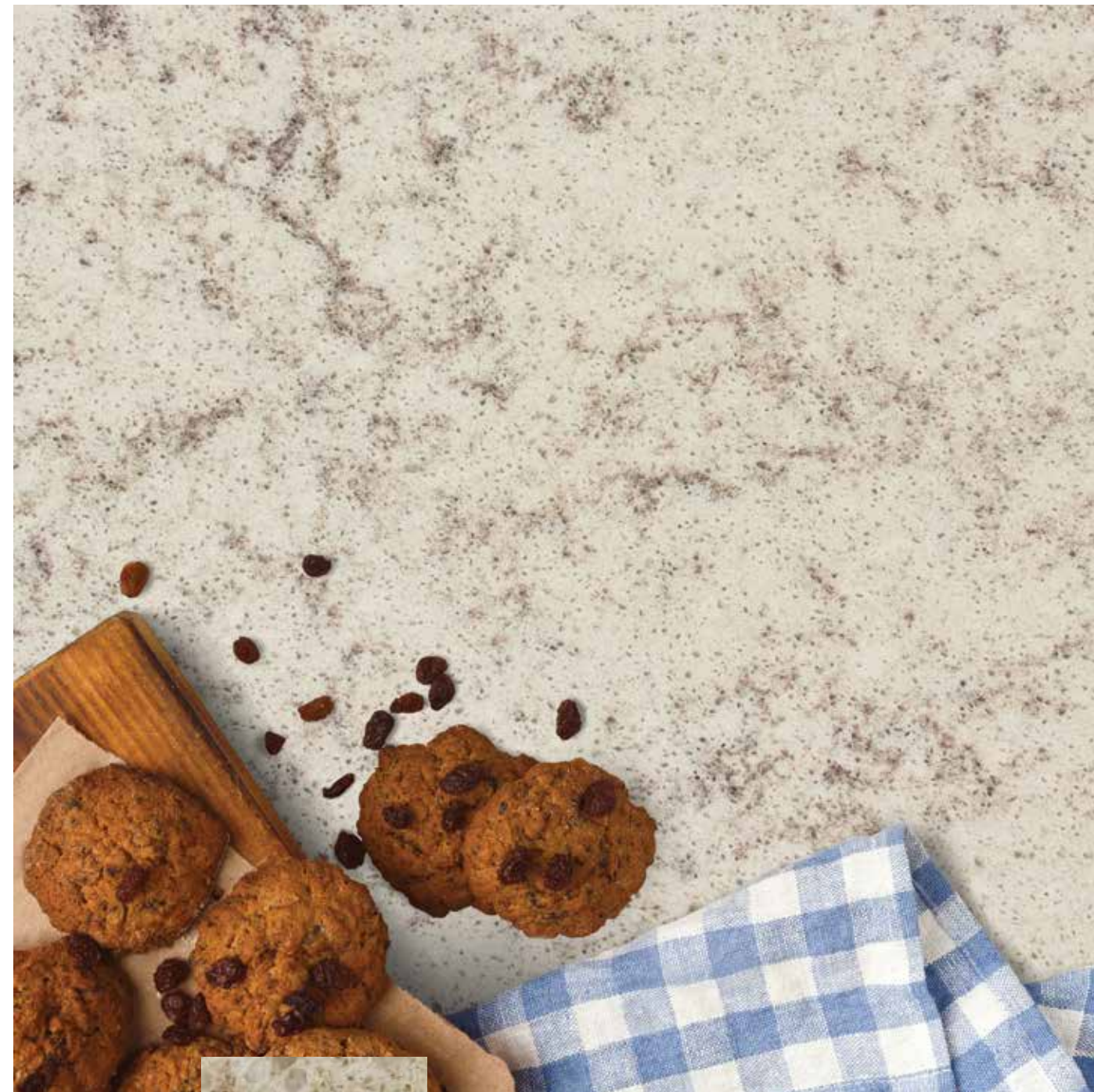
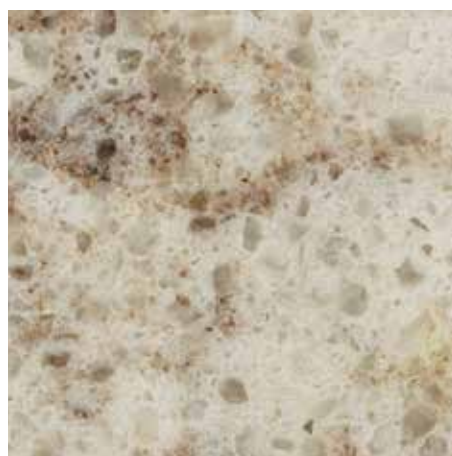
A blend of grays and warm sand colors on a white background.



**Moonstruck** Group B  
Swirls of rich merlot and golden yellow add dimension to and accent a creamy white background.



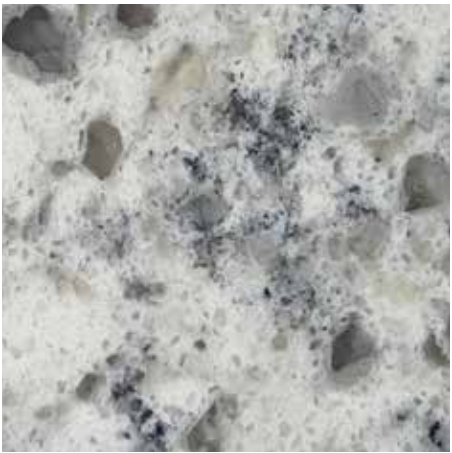
**Shorebrook** Group B  
A blend of cool grays and warm golds on a soft white background.



**Moonstruck** Group B

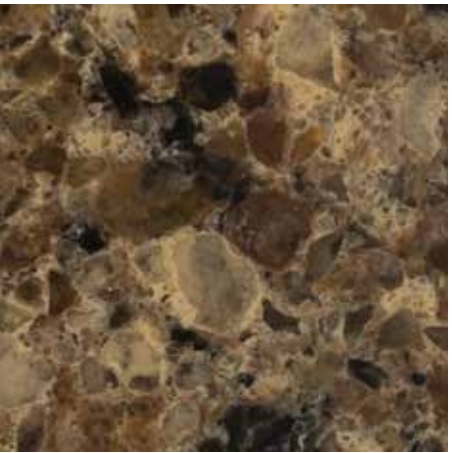


**Baileys Harbor** Group B



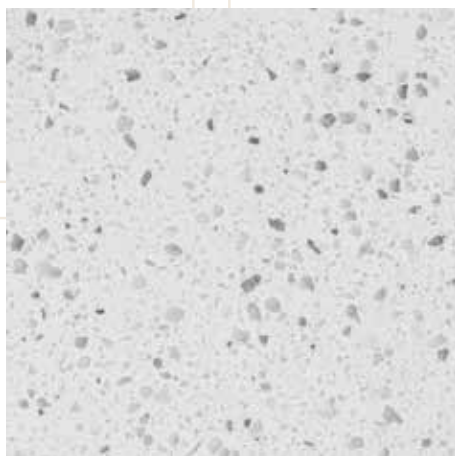
**Baileys Harbor** Group B

Cream background with tones of gray and taupe.



**St. Croix** Group B

Gold and warm brown background with flecks of burnt sienna, and black.



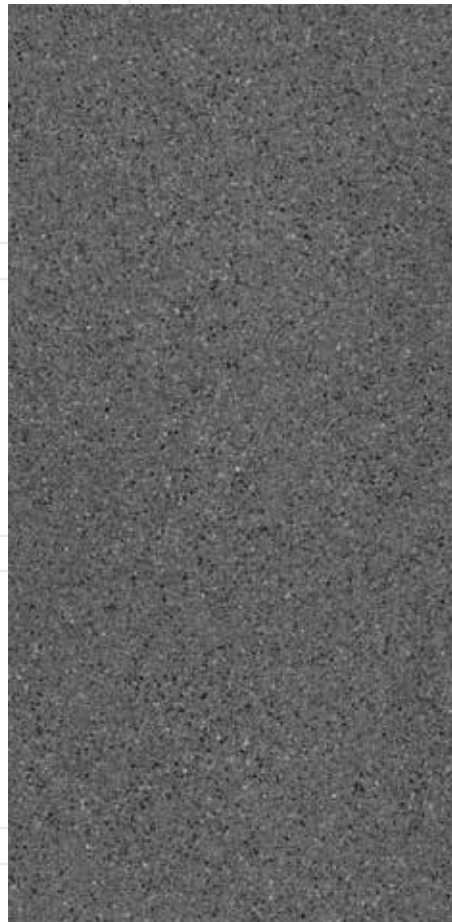
**Cotton** Group C

Cool white background with flecks of gray, and white.



**Beaumont Creek** Group C

Pebbled cream background with gray, white, tan, and black accents.



**Pebble Creek** Group C

A pebble look featuring tones of warm gray, white, black and taupe.



**Beaumont Creek** Group C

# Edge Profiles

No surface is complete without an edge profile that complements your space and style. CustomCraft Countertops® offers 4 edge profile options at no additional charge. From the classic curves of an Ogee profile, to the sleek modern look of the Double Roundover profile you are sure to find one that accentuates your space.



## End Finishes

### Profiled

End is profiled and polished to match front edge. Commonly used where full end is exposed.



### Non-Profiled

End is straight cut and polished. Commonly used where end butts up against appliance or tall cabinet.



### Unfinished

End is straight cut and unpolished. Commonly used where end butts up against a wall.





# Sink Selection

Complement your new CustomCraft Countertops® Quartz with a durable and easy-to-maintain undermount sinks. Options include premium 18-gauge stainless steel, quartz in a variety of color choices and two porcelain colors.



Stainless Steel



Quartz White



Quartz Grey



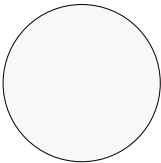
Quartz Concrete



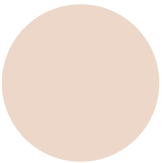
Quartz Brown



Quartz Black



Porcelain White



Porcelain Bisque

# Stainless Steel Kitchen Sinks

- Factory included
- Type 304, 18/10 stainless steel
- 18 gauge
- Elegant yet durable European soft satin brushed finish
- Patented resin matrix rim
- Lowered bowl divider
- 1/8" countertop overhang



**E-350 Stainless Steel**

- 32-3/8"W x 19"L
- Bowl Depth: 8-1/2"D
- Bowl Divider: 6-1/4"H



**E-360R Stainless Steel**

- 32-1/2"W x 21"L
- Bowl Depth: 8-3/8"D & 6-1/4"D
- Bowl Divider: 6-1/8"H



**E-340 Stainless Steel**

- 30-7/8"W x 18-7/8"L
- Bowl Depth: 9"D



**E-550 Stainless Steel**

- 33-7/8"W x 19-1/2"L
- Bowl Depth: 9"D
- Bowl Divider: 7-3/8"H





# Quartz Kitchen Sinks

- Factory included
- High density quartz composite
- Stain resistant
- Will not crack from thermal shock
- Extremely scratch and chip resistant
- Heat resistant up to 530°F
- 1/8" countertop overhang

## E-350Q

- 32-3/8"W x 19"L
- Bowl Depth: 8-1/2"H
- Bowl Divider: 6-1/4"H



## E-360QR

- 32-3/8"W x 19"L
- Bowl Depth: 8-1/2"D & 7-1/2"D
- Bowl Divider: 6-1/8"H



## E-340Q

- 28-3/8"W x 16-1/4"L
- Bowl Depth: 9"D



White



Grey



Concrete



Brown



Black

# Porcelain Vanity Sinks

- Factory installed
- Enamel finish
- Will not stain or discolor
- Easy-to-clean surface



### Sorrento Small

- 15"W x 12"L
- Bowl Depth: 7-1/2"D
- 3/8" countertop overhang



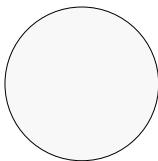
### Sorrento Large

- 17"W x 14"L
- Bowl Depth: 8-1/4"D
- 3/8" countertop overhang

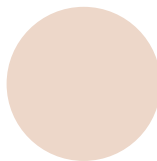


### Forenza

- 17"W x 13"L
- Bowl Depth: 7-1/2"D
- 1/4" countertop overhang
- Available in white only



White



Bisque





# Faucet Hole Options

## Kitchen

Due to the difficulty of cutting faucet holes on the job site, CustomCraft Countertops® can cut them for you. Faucet holes are cut at 1-3/8" to accommodate your faucet, soap dispenser, dishwasher vent, or sprayer. Check your faucet package for correct number of holes. Optional auxiliary holes available.



1 Hole Faucet



2 Hole Faucet



3 Hole Faucet



4 Hole Faucet

## Vanity

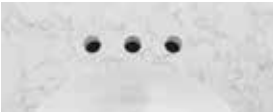
Choose your faucet hole cutout options — vanity faucet holes are 1-3/8" diameter.



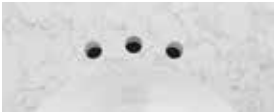
Single Hole



4" on Center



8" on Center



8" Contour on Center

# Solid Surface Countertops

## Benefits Of Solid Surface

Your countertop should be functional and beautiful. Solid Surface offers a surface durable enough to handle everyday life and offers the selection to do it beautifully. The 100% acrylic surface is low-maintenance, stain resistant, and is renewable and repairable-It's the perfect choice for any space.



Renewable &  
Repairable



Stain Resistant



Non-Porous



Fast 14 Day  
Lead Time



15 Year Limited  
Warranty





# Color Selection

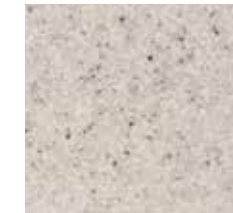
## Group A



Oslo White



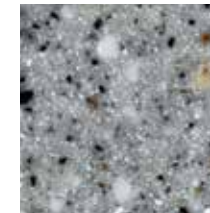
Boulder Drift



Mirage



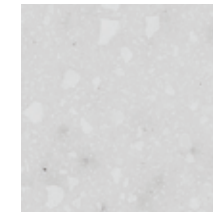
Dogwood



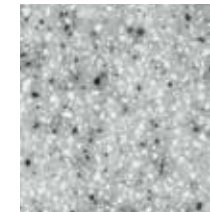
Cambridge



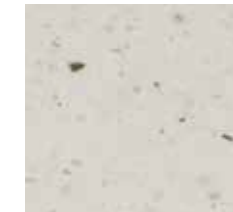
Grayscale



Silverstone



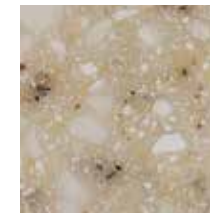
Mist



Cashmere Crema



Smoked Pewter



Beech

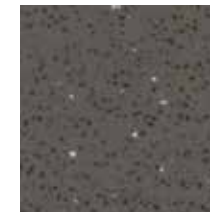


Tuscon

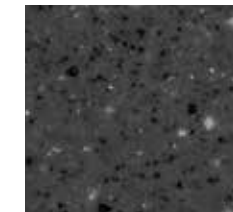
## Group B



Woodstock

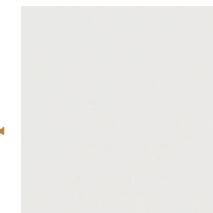


Carbonite



Yuri Grey

## Group C



White



Metal Grey



Bechamel



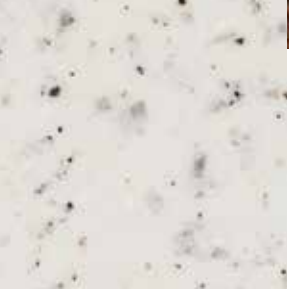
**Oslo White** Group A



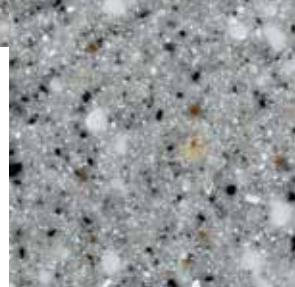
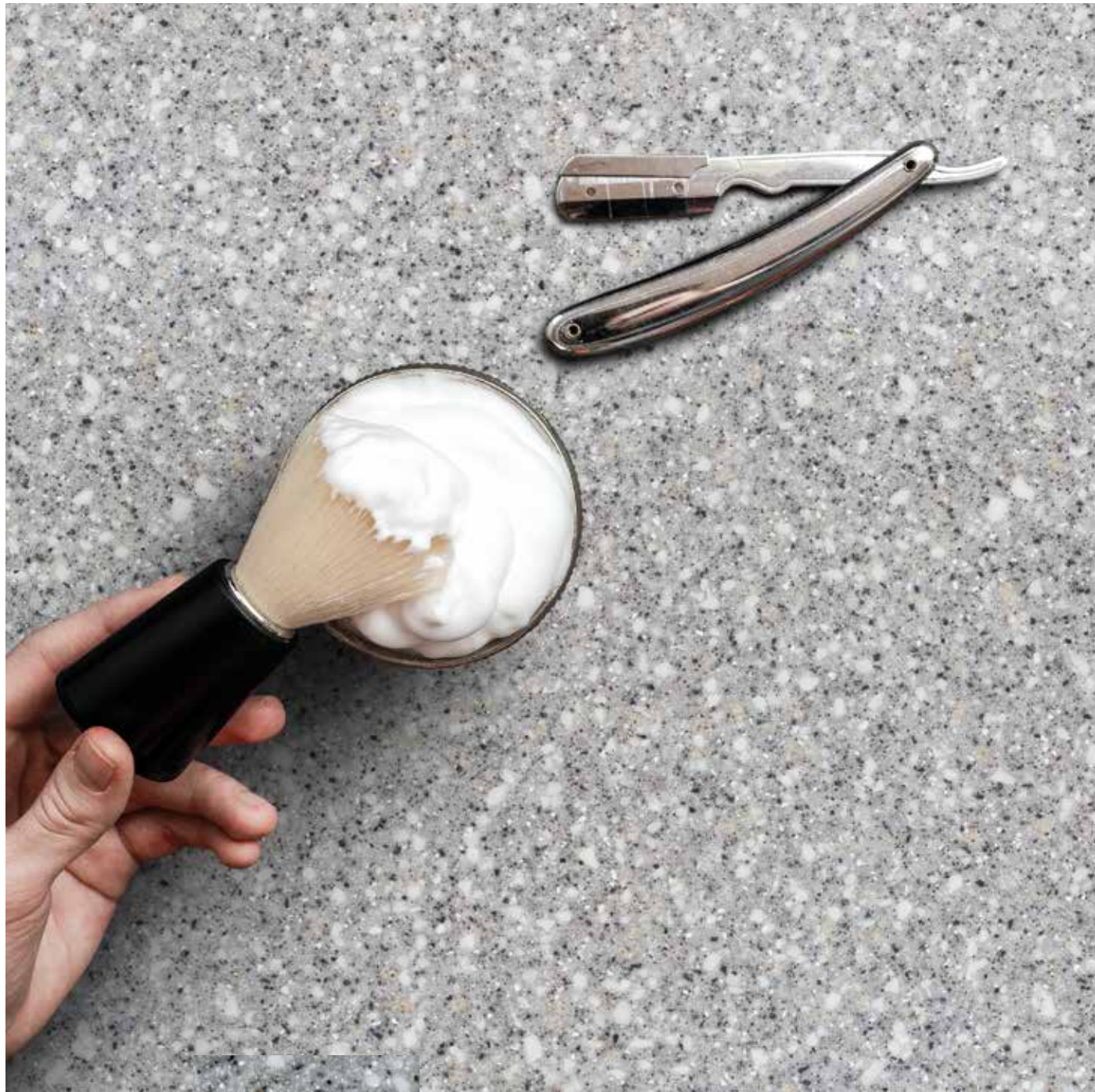
**Boulder Drift** Group A



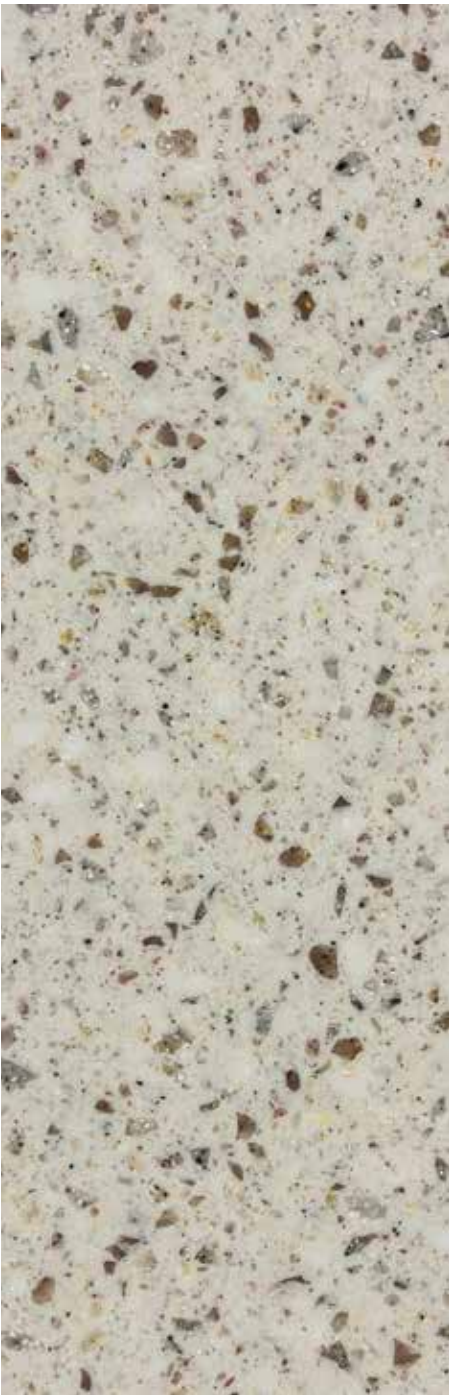
**Mirage** Group A



**Boulder Drift** Group A



Cambridge Group A



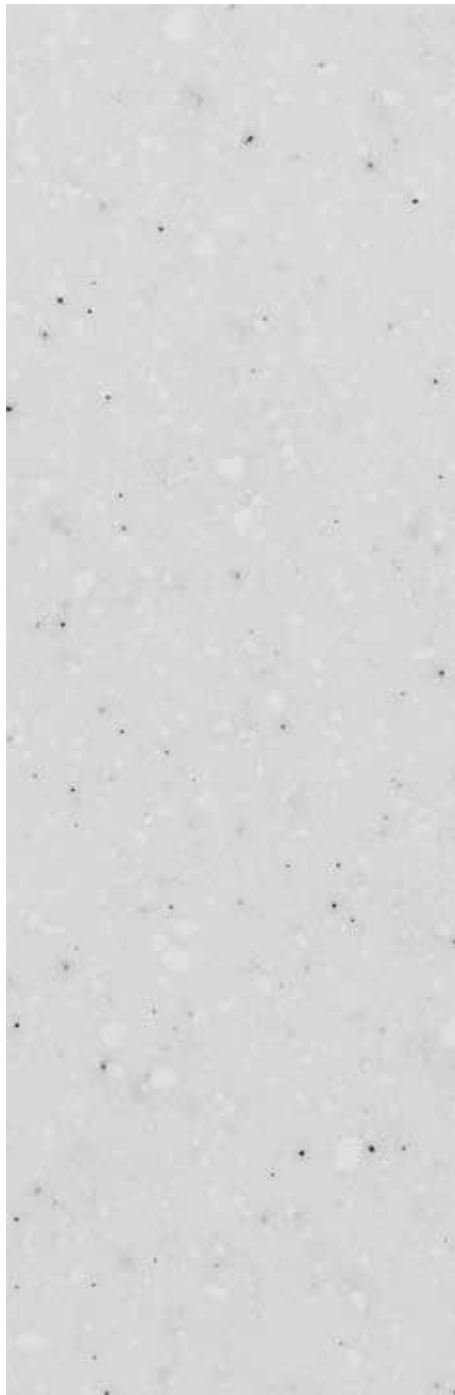
Dogwood Group A



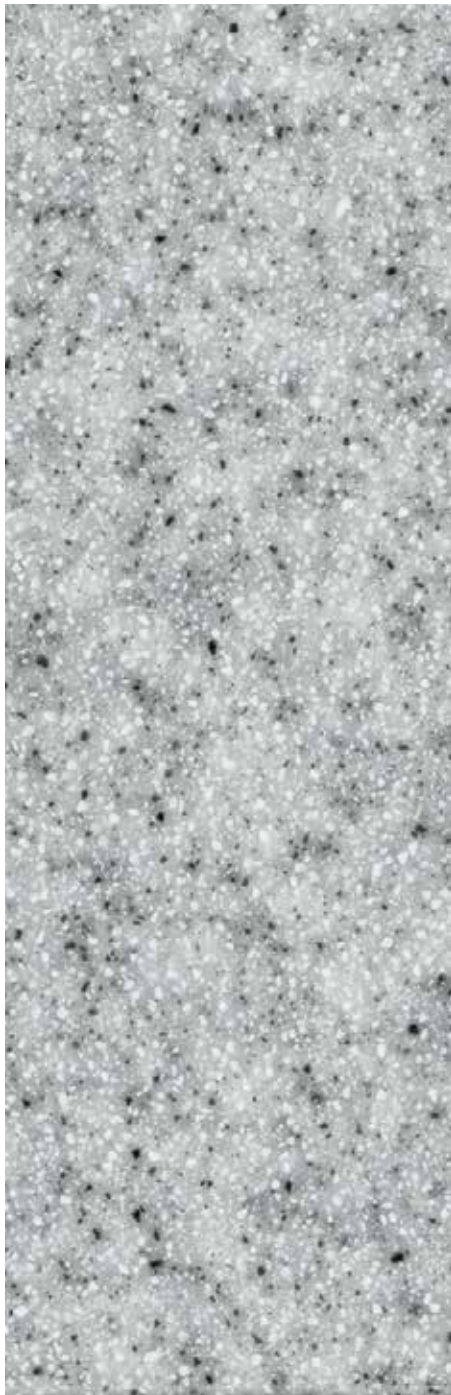
Grayscale Group A



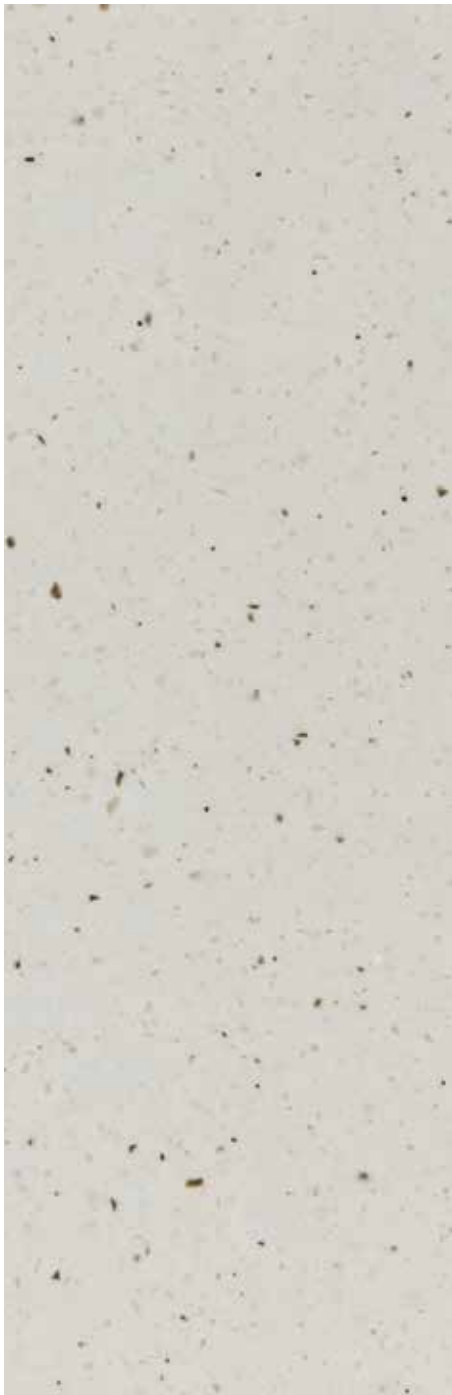
Cambridge Group A



Silverstone Group B



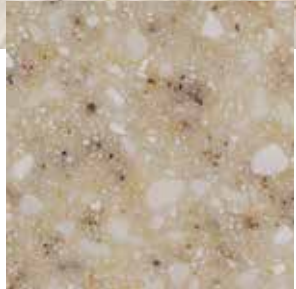
Mist Group B



Cashmere Crema Group B



Silverstone Group B



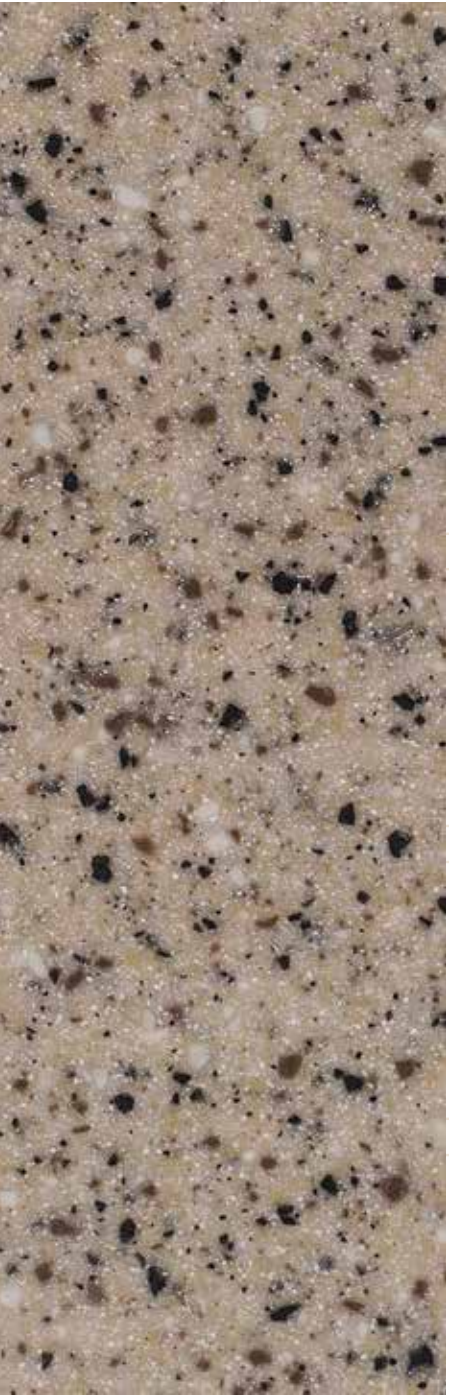
**Beech** Group B



**Smoked Pewter** Group B



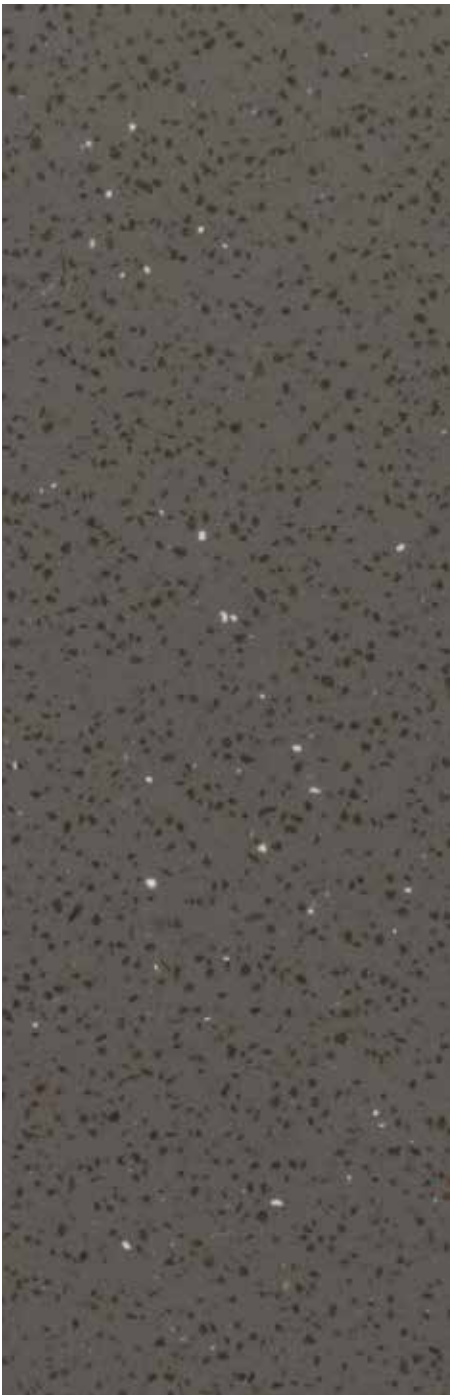
**Beech** Group B



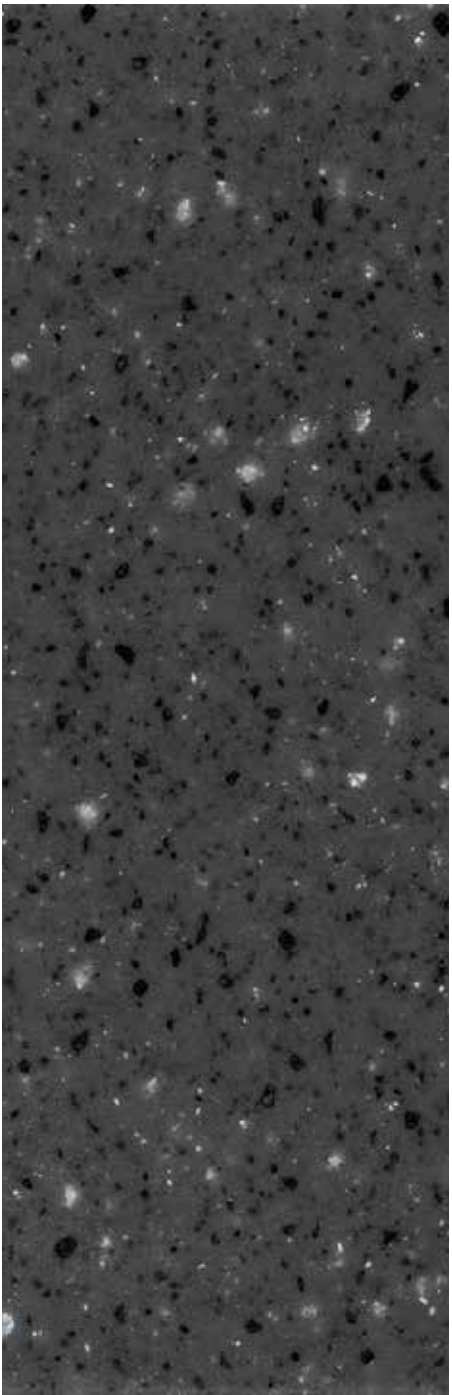
**Tuscon** Group B



Woodstock Group B



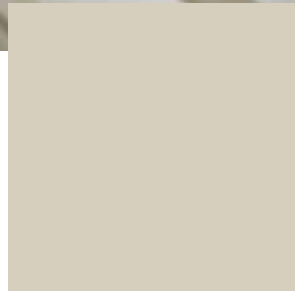
Carbonite Group B



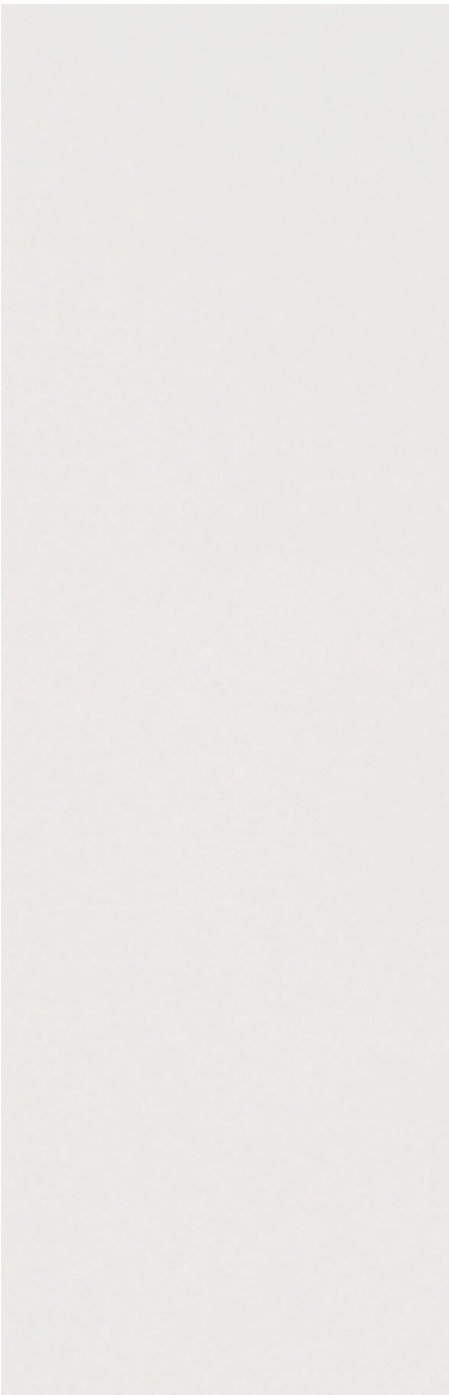
Yuri Grey Group B



Yuri Grey Group B



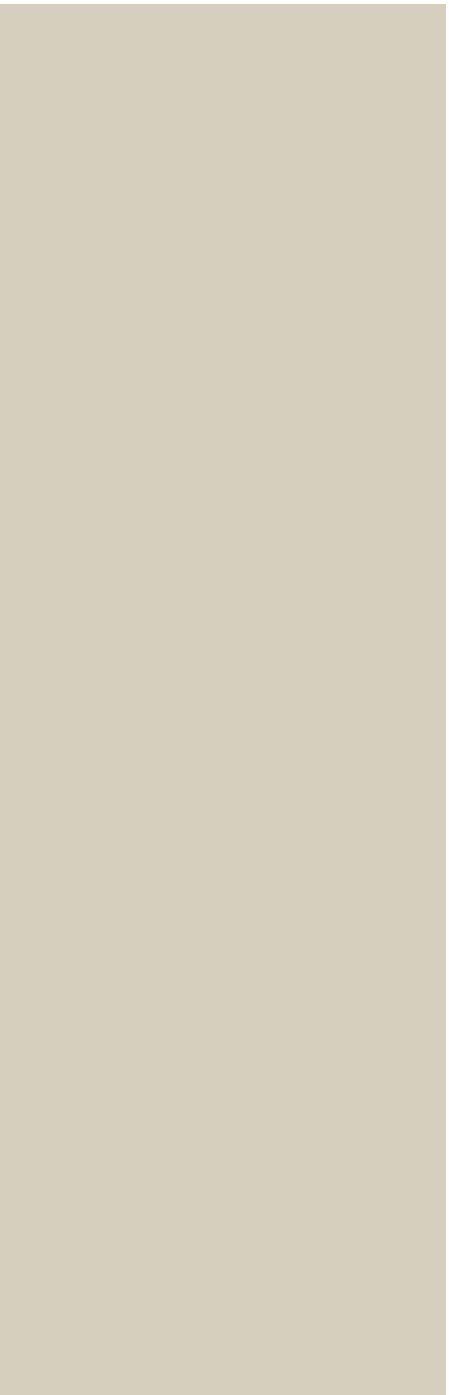
**Bechamel** Group C



**White** Group C



**Metal Grey** Group C



**Bechamel** Group C

# Edge Profiles

Complete the look with an edge profile that defines your style. Choose from 4 edge profiles at no additional charge.

- Ogee
- Bevel
- Double Roundover
- Roundover

## End Finishes

### Profiled

End is profiled and polished to match front edge. Commonly used where full end is exposed.

### Non-Profiled

End is straight cut and polished. Commonly used where end butts up against appliance or tall cabinet.



# Sink Selection

Complement your new CustomCraft Countertops® Solid Surface with a durable and easy-to-maintain undermount sinks. Options include premium 18-gauge stainless steel, quartz in a variety of color choices, two porcelain colors and two acrylic colors.



Stainless Steel



Quartz White



Quartz Grey



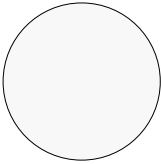
Quartz Concrete



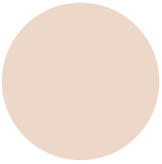
Quartz Brown



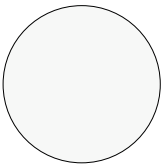
Quartz Black



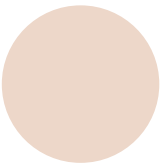
Porcelain White



Porcelain Bisque



Acrylic White



Acrylic Bisque

# Stainless Steel Kitchen Sinks

- Factory installed
- Integrated
- Type 304, 18/10 stainless steel
- 18 gauge
- Elegant yet durable European soft satin brushed finish
- Patented resin matrix rim
- Lowered bowl divider



## E-350 Stainless Steel

- 32-3/8"W x 19"L
- Bowl Depth: 8-1/2"D
- Bowl Divider: 6-1/4"H



## E-360R Stainless Steel

- 32-1/2"W x 21"L
- Bowl Depth: 8-3/8"D & 6-1/4"D
- Bowl Divider: 6-1/8"H



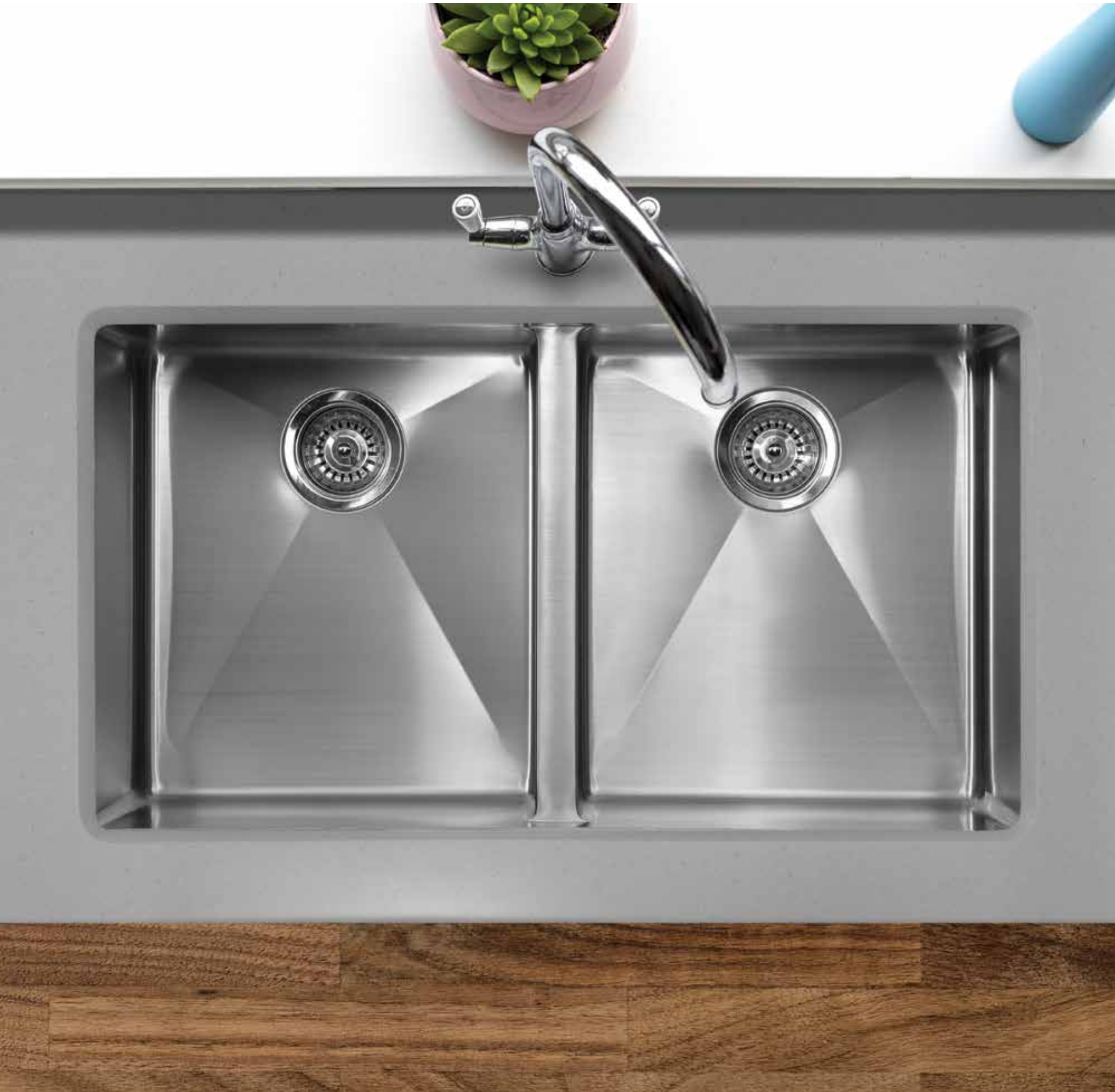
## E-340 Stainless Steel

- 30-7/8"W x 18-7/8"L
- Bowl Depth: 9"D



## E-550 Stainless Steel

- 33-7/8"W x 19-1/2"L
- Bowl Depth: 9"D
- Bowl Divider: 7-3/8"H





# Quartz Kitchen Sinks

- Factory installed
- Integrated
- High density quartz composite
- Will not stain or discolor
- Will not crack from thermal shock
- Extremely scratch and chip resistant
- Heat resistant up to 530°F

## E-350Q

- 32-3/8"W x 19"L
- Bowl Depth: 8-1/2"
- Bowl Divider: 6-1/4"H



## E-360QR

- 32-3/8"W x 19"L
- Bowl Depth: 8-1/2" & 7-1/2"
- Bowl Divider: 6-1/8"H



## E-340Q

- 28-3/8"W x 16-1/4"L
- Bowl Depth: 9"



White



Grey



Concrete



Brown



Black

# Porcelain Vanity Sinks

- Factory installed
- Enamel finish
- Will not stain or discolor
- Easy-to-clean surface
- Enamel finish allows the use of all types of cleaners



### Sorrento Small

- 15"W x 12"L
- Bowl Depth: 7-1/2"
- 3/8" countertop overhang



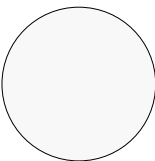
### Sorrento Large

- 17"W x 14"L
- Bowl Depth: 8-1/4"
- 3/8" countertop overhang

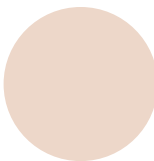


### Forenza

- 17"W x 13"L
- Bowl Depth: 7-1/2"
- 1/4" countertop overhang
- Available in white only



White



Bisque





# Acrylic Vanity Sinks

- Factory installed
- Integrated
- High density acrylic solid surface
- Will not stain or discolor
- Easy-to-clean surface



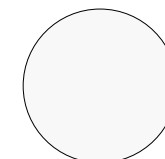
## Richmond

- 21"W x 14"L
- Bowl Depth: 5-1/4"

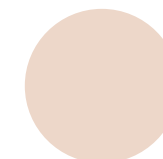


## Swan

- 18-1/8"W x 14-3/4"L
- Bowl Depth: 5"



White



Bisque

# Laminate Countertops

## Benefits Of Laminate

Laminate Countertops offer the widest selection of colors and patterns, requires minimal maintenance and are the most economical countertop option making them the most popular countertop material on the market. The countertops are created by adhering laminate to a particleboard core. Laminate countertops are durable, easy to install and DIY friendly.

Complement any space with our curated collection of over 150 colors that are versatile enough for kitchens, bathrooms and everything in between. Match one of 9 edge profiles to the color of your choice to make a custom look as unique as you.



Large Patterns



Largest Selection  
Of Colors



Texture Options



Fast 14 Day  
Lead Time



1 Year Limited  
Warranty

	STANDARD	HIGH RESOLUTION
Durable	✓	✓
Easy Care & Maintenance	✓	✓
Texture Options	✓	✓
Largest Selection Of Colors	✓	
9 Edge Profile Options	✓	✓
Easy To Install	✓	✓
1' To 4' Pattern Repeats	✓	
4' To 6' Pattern Repeats		✓

# High Resolution Laminate

CustomCraft Countertops® High Resolution Laminate offers all the same great benefits of Standard Laminate. High Resolution Laminate offers larger pattern repeats of up to 6' that best replicate natural stone and wood patterns.





# Standard Laminate

CustomCraft Countertops® Standard Laminate offers you the ability to transform your space with durable, low-maintenance options that are easy to install. Pattern repeats of 1' to 4' allow for a more consistent pattern throughout the countertop.

# High Resolution Laminate



Nero Marquina  
7403-11



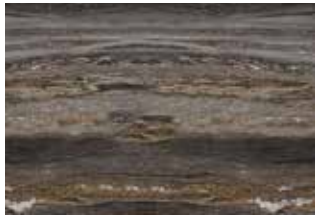
Jet Sequoia  
3476-46



Stormy Night Granite  
9537-34



Magnata  
1880K-35



Black Fusion  
1320-46



Istanbul Marble  
7405-34



Moon Dust  
MG115



Deepstar Slate  
1818-35



Ferro Grafite  
9483-34



Dolce Vita  
3420-46



Cipollino Grigio  
1882K-35



Woodland Marble  
3703-11



Sea Pearl  
9534-34



Brazilian Grey  
5026D-07



Silver Bronze  
MG120-V



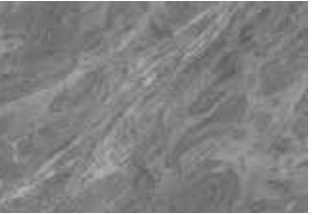
Printed representations of colors may differ from actual samples.



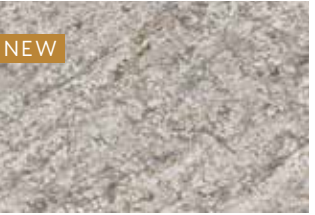
**Trinidad Lapidus**  
1879K-35



**Azul Aran**  
9303-RD



**Brazilian Blue**  
5023K-7



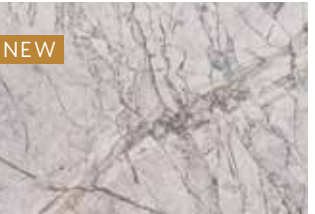
**Bello Romano**  
5039-15



**Neapolitan Stone**  
7404-11



**Crescent Partico**  
MG200-PV



**Mediterranean Marble**  
3702-34



**Café Azul**  
6319-RD



**Cipollino Bianco**  
1881K-35



**Coco Brown**  
MG130-V



**River Gemstone**  
1832-35



**Toffee Di Pesco**  
5000K-35



**Antique Mascarello**  
3466-RD



**Atlantic Stone**  
9367-34



**Bianco Romano**  
1872K-35



**Silver Travertine**  
1858K-55



**Autumn Carnival**  
1877K-35



**Dark Bordeaux**  
MT390-V



**Wide Plank Walnut**  
9479-NG



**Summer Carnival**  
1875-35



**Winter Carnival**  
1874-35



**Golden Romano**  
1871K-35



**Granito Amarelo**  
1878K-35



**Borgini Marble**  
TBD-21



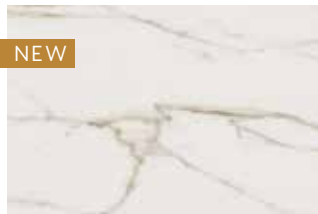
**River Gold**  
3546-46



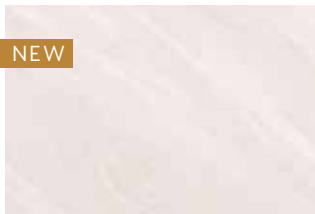
**Perla Piazza**  
1867K-55



**Drama Marble**  
5010K-55



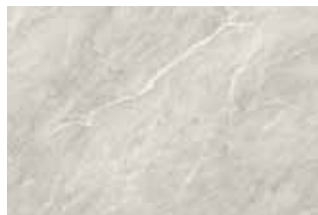
**Calacatta Lincoln**  
5042K-7



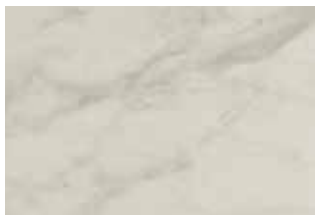
**Nuvolato Crema**  
P1024-BT



**White Cascade**  
5003K-55



**Rice Lake**  
MG190-EV



**Calacatta Cava**  
5018-11



**Carrara Pearl**  
9286-RD



**Spring Carnival**  
1876K-35



**Fantasy Marble**  
9302-34



**Ice Mist**  
5040K-7



**Quartzite Bianco**  
9536-34



**Marmo Bianco**  
1885K-55



**Cote D' Azur**  
1886K-07



**Calacatta Marble**  
3460-46



**Bianco Statuario**  
P1022-VL

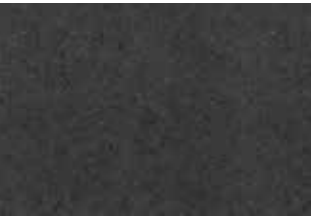




# Standard Laminate



**Upland Stone**  
MG160-R



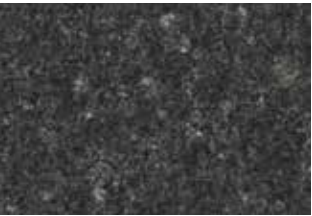
**Black Shalestone**  
9527-34



**Saint Laurent Marble**  
P1008-VI



**Basalt Slate**  
3690-58



**Midnight Stone**  
6280-46



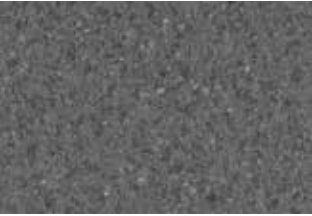
**Forged Steel**  
4995-60



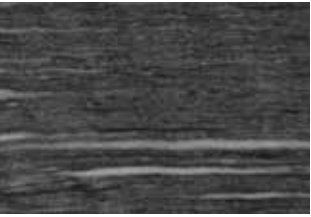
**Black Bardiglio**  
5019-34



**Graphite Talc**  
AG361-N



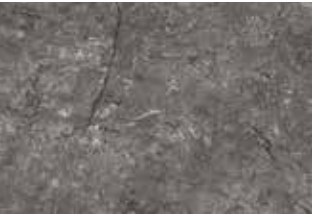
**Smoke Quarstone**  
6220-58



**Stepping Stone**  
AE0500-SD



**Noir Envision**  
7500-58



**Andorra Shadow**  
4998K-22



**Marmara Gray**  
7407-34



**Gold Flake Granite**  
MG081-R



**Smokey Topaz**  
4589-07



**Portoro**

4980K-22



**Slate Imperial Marble**

4980K-22



**Indigo Twill**

P386-CA



**Rare Earth Slate**

SI603-N



**Madura Gold**

4923K-52



**Jamocha Granite**

7734-46



**Woodstock Granite**

GR204-N



**Old Mill Oak**

7973-12



**Oxidized Beamwood**

9484-NG



**Madura Gold Granite**

GR401-N



**Praline Antico**

5008K-07



**Granite**

4550-01



**Granito Casacata**

5041K-15



**Glacier Quartzite**

5025K-22



**Golden Juparana**

4932-38



**Amber Kashmir**

6227-46



**Sierra Cascade**

5005K-38



**Venetian Gold Granite**

6223-58





**Geriba Gray**  
9308-46



**Hugo Gray**  
MG125-SD



**Benjamin Grey**  
1887K-21



**Cookies & Cream**  
AG130-F



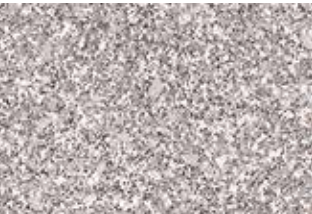
**Elemental Concrete**  
8830-58



**Ink Vesta**  
4979K-07



**Perlato Granite**  
3522-46



**Rose Granite**  
MR130-N



**Argento Romano**  
6697-46



**Mercury Vesta**  
4988K-07



**Frappe**  
LN6001-SM



**Pebble Piazza**  
5009-60



**Leche Vesta**  
4987K-07



**White Shalestone**  
9525-34



**S'mores**  
WP500-N



**Lakeshore**  
5046K-15



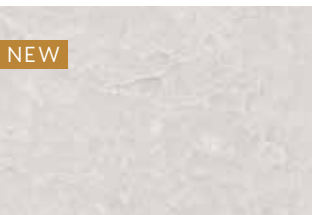
**Seasoned Plank Elm**  
6477-NG



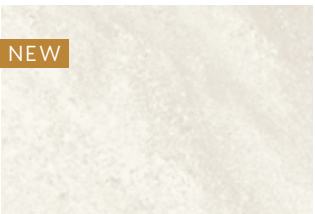
**Anzio Marble**  
5037-21



**Dreamcatcher**  
P1018-VL



**Quartz Frost**  
5031-7



**Beachwalk**  
5044-60



**Fog**  
961-58



**Bubble Art**  
8958-58



**Mont Blanc**  
P1009-VI



Ivory Kashmir

6226-46



Ouro Branco

3526-58



Travertine

3526-58



Bordeaux Juparana

4929K-38



Butterum Granite

7732-58



Eden Granite

MG071-R



Café Di Pesco

4955-22



Belmonte Granite

3496-46



Star Dune

9309-46



White Juparana

4931-38



City Of Lights

MT330-N



Typhoon Bordeaux Crème

P1005-VI



Silver Quartzite

9497-58



Typhoon Ice

4952-23



Italian White Di Pesco

4954K-22



Carrara Bianco

6696-58



Beige Pampas

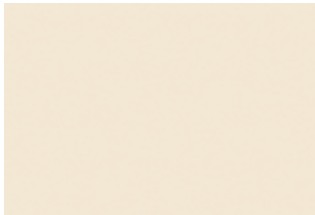
4170-60



Rocky Mountain High

AT161-N





Natural Almond

D30-60



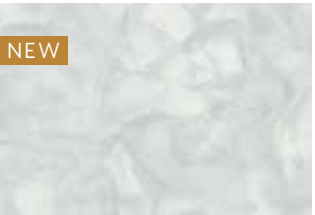
Calacatta Oro

4981-38



Hebron White

1888K-21



Sugar Glass

3705-58



Arenite Cream

5027K-07



White Ice Granite

9476-58



Faded Memories

ME100-SD



Ortensia

5038K-15



Polar Cap

MW570-R



White Bardiglio

9306-58



Ice Onyx

7408-43



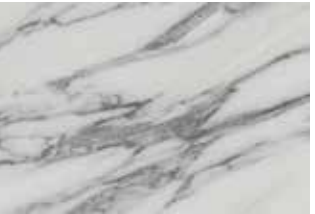
Versailles Marble

P1016-VL



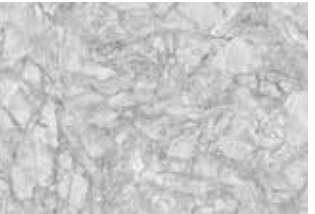
Nuvolato Marble

P1016-VL



Arabescato Marble

P1000-VL



Arctic Expedition

Y0634-38



Arden Park Carrera

Y0371K-22



Carrara Venato

P1015-VI



White Carrara

4924-38



White Painted Wood

8902-NF



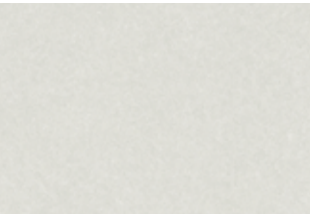
Chalk Imperiale Marble

MW575-SD



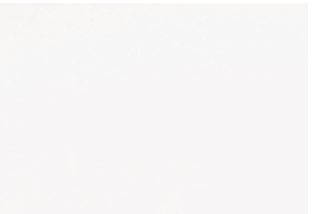
White Marble Herringbone

9310-58



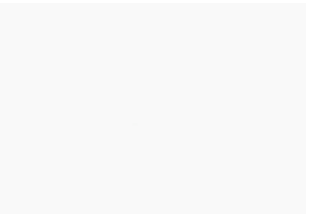
Grey Pampas

4168-58



Frosty White

1573-60



Brite White

459-58



Printed representations of colors may differ from actual samples.



# Edge Profiles

## Wrap Edges



Ogee Full Wrap



Aurora



Marquis



European

## Standard Edges



Ogee



Principal



No-Drip



Modern

## Specialty Edges



Self

# End Finishes



## End Cap

End is straight cut with laminate end cap where full end is exposed. Commonly used where end butts up against appliance, tall cabinet, or where end cap is fully exposed.



## Straight Cut

End is straight cut and uncapped. Commonly used where end butts up against a wall.



# Sink Selection

Complement your new Laminate countertop with a durable and easy-to-maintain undermount sinks. Options include premium 18-gauge stainless steel, Acrylic and quartz in a variety of color choices.



Stainless Steel



Quartz White



Quartz Grey



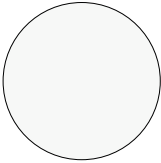
Quartz Concrete



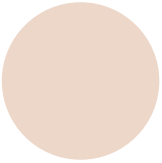
Quartz Brown



Quartz Black



Acrylic White



Acrylic Bisque

# Stainless Steel Kitchen Sinks

- Factory installed
- Integrated
- Type 304, 18/10 stainless steel
- 18 gauge
- Elegant yet durable European soft satin brushed finish
- Patented resin matrix rim
- Lowered bowl divider



## E-350 Stainless Steel

- 32-3/8"W x 19"L
- Bowl Depth: 8-1/2"D
- Bowl Divider: 6-1/4"H



## E-360R Stainless Steel

- 32-1/2"W x 21"L
- Bowl Depth: 8-3/8"D & 6-1/4"D
- Bowl Divider: 6-1/8"H



## E-340 Stainless Steel

- 30-7/8"W x 18-7/8"L
- Bowl Depth: 9"D



## E-550 Stainless Steel

- 33-7/8"W x 19-1/2"L
- Bowl Depth: 9"D
- Bowl Divider: 7-3/8"H





# Quartz Kitchen Sinks

- Factory installed
- Integrated
- High density quartz composite
- Will not stain or discolor
- Will not crack from thermal shock
- Extremely scratch and chip resistant
- Heat resistant up to 530°F

## E-350Q

- 32-3/8"W x 19"L
- Bowl Depth: 8-1/2"
- Bowl Divider: 6-1/4"H



## E-360QR

- 32-3/8"W x 19"L
- Bowl Depth: 8-1/2" & 7-1/2"
- Bowl Divider: 6-1/8"H



## E-340Q

- 28-3/8"W x 16-1/4"L
- Bowl Depth: 9"



White



Grey



Concrete



Brown



Black

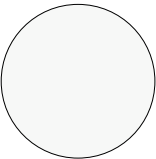
# Acrylic Vanity Sinks

- Factory installed
- Integrated
- High density acrylic solid surface
- Will not stain or discolor
- Will not crack from thermal shock
- Easy-to-clean surface
- Enamel finish allows the use of all types of cleaners

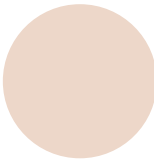


**Charlotte**

- 19"W x 15"L
- Bowl Depth: 6"



White



Bisque



**Richmond**

- 21"W x 14"L
- Bowl Depth: 5-1/4"
- Available in White only





# In-Stock Laminate

## Ready To Take Home Today

We partnered with Formica Group to offer a wide range of looks and styles. Transform your space with modern laminate that are as beautiful as they are durable. With multiple lengths and styles available to take home today. There is sure to be something that offers a solution for an easy weekend project.

# In-Stock High Resolution



Calacatta Marble



Aurora

Calacatta Cava



Aurora

Atlantic Stone



Ogee Full  
Wrap

Café Azul

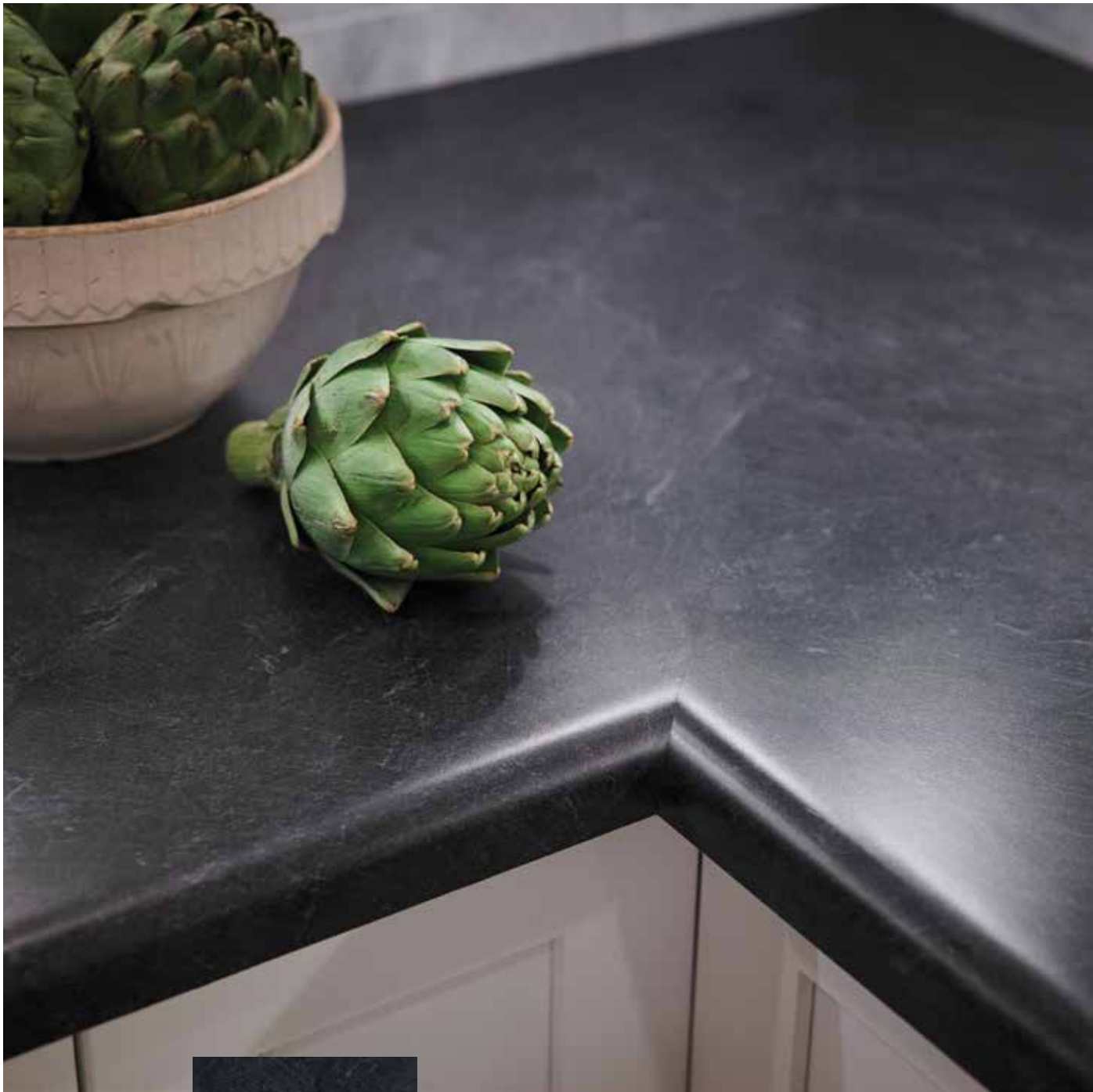


Aurora



Café Azul

# In – Stock Standard



Basalt Slate



Argento Romano



Modern



Carrara Bianco



Principal



Jamocha Granite



Modern



Basalt Slate



Principal



# In-Stock Options

Installation items are available. Includes: Color Match Caulk, Build-up Strips, Screws, Color-Matched Seam Fill, Shims. If required: Moisture Barrier Tape, Water Resistant Glue, Fasteners (Dual Action Fasteners or Miter Bolts & Biscuits), 5mm Allen Wrench.

## Available Lengths

\*Selection may vary in some locations



\*12'



10'



8'



6'



4'



Laminate sheets available in 4'-12' (even lengths)



Available in 4'-12' (even lengths) with straight cut raw ends and integrated backsplash



Available in 6' and 10' with one end mitered (left or right) with integrated backsplash



End Cap Kit

# Countertop Templating

## What is a template?

A full sized rendering of your countertop that allows you to verify all dimensions, cutouts, end treatments, overhangs, etc before your countertop is made.

## Benefits of countertop templating?

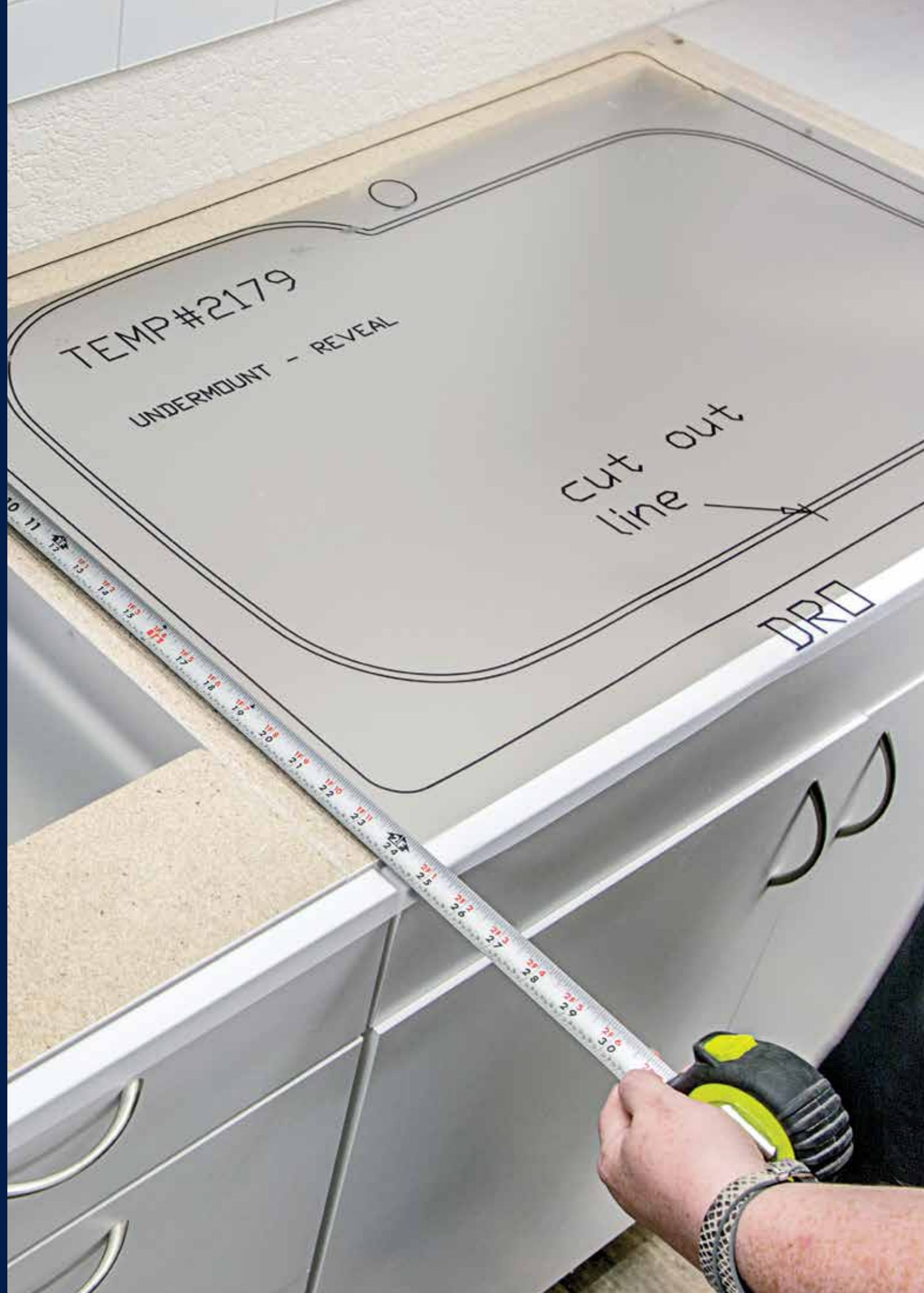
- Available for all countertop materials and layouts
- Ships directly to your door
- Helps you avoid costly mistakes by allowing you to verify all aspects of your design
- Make changes before your countertop is produced

## Template process

1. Design your countertops at your local **MENARDS**
2. Purchase your template and countertop
3. Template will ship to your door\*
4. Verify your template
  - A. Dimensions
  - B. Cutouts
  - C. End Treatments
5. Approve your template online at [midwestmanufacturing.com/templating](http://midwestmanufacturing.com/templating) or make changes at your local **MENARDS** store.\*\*

\* Templates can not ship to a PO Box.

\*\* The lead time on the countertop starts from the date the template is approved.



# Installation Guides

## Need a hand?

Having trouble installing your countertop? Take a look at our installation guides online or included in the installation kit. Scan the QR Code for a direct link to our installation guides



Quartz



Solid Surface



Laminate

# Measuring Guidelines

When measuring a kitchen for countertops, you may either measure the cabinets or existing countertops. Always measure the "Outside" dimensions (from back corner of the cabinets or existing top to the other back corner). Being consistent when measuring all sections helps to reduce any confusion when the pieces are ordered. Diagonal corners and overhangs will require measurements of the countertop and the cabinets in certain areas. Note all appliance locations and exposed countertops ends to ensure that proper end treatments are ordered. Standard countertops usually overhang the front edge of cabinets by 1-1/4" to 1-1/2". Our tops are manufactured to give a 1-5/16" front overhang to standard kitchen and vanity cabinets.

## Straight Countertop / Island / Vanity Top

Allow for overhangs on any exposed ends. If measuring cabinets, note any overhangs on exposed ends.

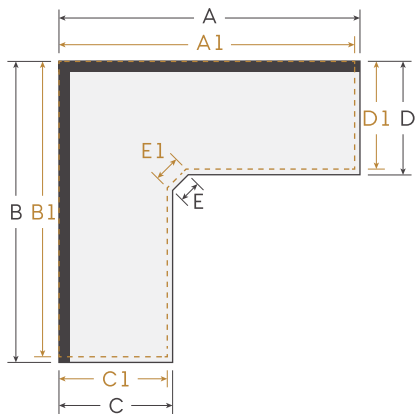
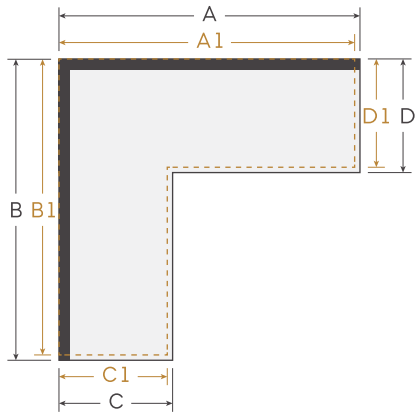
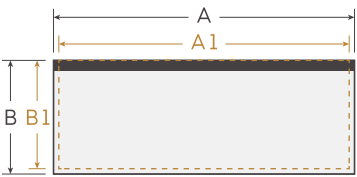
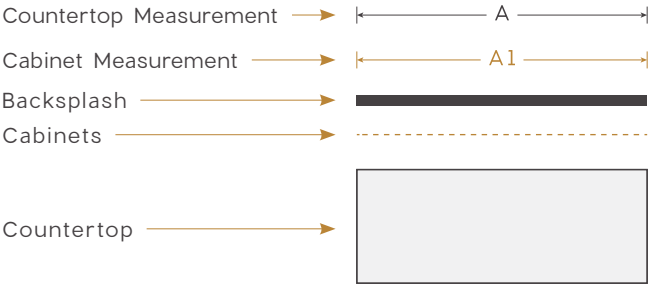
## Corner Countertop Section

Whenever two pieces of countertop join together, a miter or seam will be necessary (joints may be a 45°, a j-miter or a seamless corner). If you are making dimension changes from existing countertops to new countertops, be sure to consider space needed to accommodate any extra length or width added.

## Diagonal Corner Countertop

Diagonal corner cabinet layouts require the cabinet face frame measurement (E) along with our overall countertop dimensions. With a standard front overhang of 1-5/16" the D measurements is 7/8" less than the face frame of the cabinet. This particular corner style is a traditional corner. Depending on the angle of the diagonal corner, an additional section in the back corner may be necessary to complete the countertop.

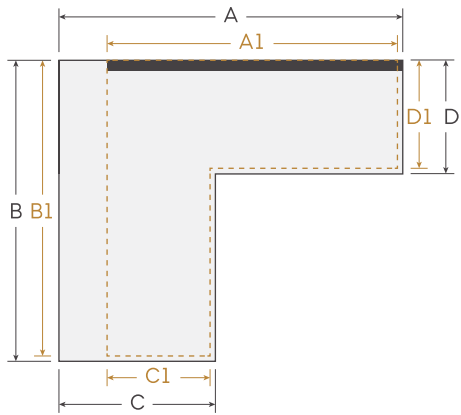
### Key



## 90° Corner To Peninsula / Corner To Peninsula

Backsplash will end where the back corner of your cabinet ends.

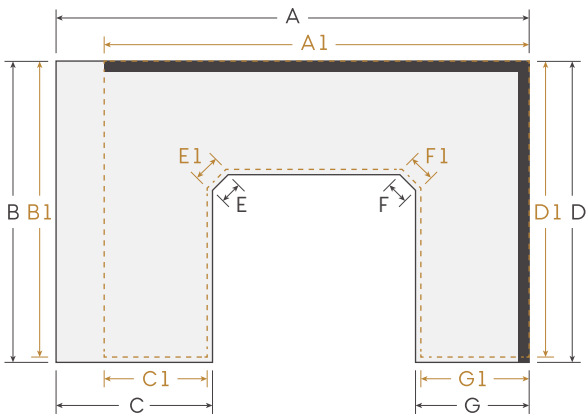
Gold line represents cabinets. Take care when measuring this portion of the layout. Be sure to provide us with the dimension of your cabinets in this instance. This ensures that the countertop joining the peninsula will be cut to the proper length.



## Dual 45° Corner Countertop with Peninsula

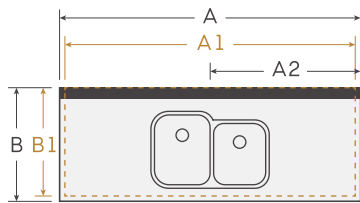
Backsplash will end where the back corner of your cabinet ends. Requires loose backsplash on laminate, backsplash can end at any point due to being loose on all three materials.

Gold line represents cabinets. Take care when measuring this portion of layout. Be sure to provide us with the dimensions of your cabinets in this instance. This ensures that the countertop joining the peninsula will be cut to the proper length. Depending on the angle of the diagonal corner, an additional section in the back corner may be necessary to complete the countertop.



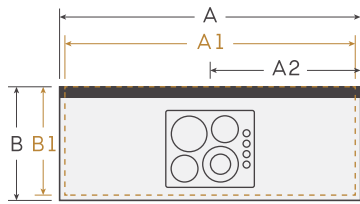
## How To Measure Your Sink

Sink cutouts require the measurement from the right-most end of the piece containing the sink hole to the center of the plumbing or sink base (A2). Sink cutouts size is needed. Note the sku, brand, and model number of the sink you will be installing. Handmade/hammered sinks will require additional measurements before cutting, as each sink can vary slightly.



## How To Measure Your Drop-in Appliance

Drop-in appliances require the measurement from the right-most end of the countertop to the center of the appliance (A2). Appliance cutouts size is needed. Note the sku, brand, and model number of the appliance you will be installing.



# Sketching Your Countertops

Start sketching your countertop layout on the graph paper. Follow the checklist to help with indicating all the appropriate items.

## Checklist

Please complete the checklist below to better assist the sketching process.

1. Sketch the shape of your kitchen layout  
(cabinets, appliances, and openings)

☐
2. Mark edge profiles and end finishes

☐
3. Mark radius and clipped corners

☐
4. Mark sink location and indicate type of sink  
(single, double, undermount, drop-in, apron)

☐
5. Mark appliance locations  
(stove, fridge, dishwasher, oven, etc.)

☐
6. Mark any area on the plan that is not countertops  
(refrigerator, pantry area, etc.)

☐
7. Write down all countertop measurements, length and width  
(Page 112–113 for measuring guide)

☐

## Material

Laminate ☐ Solid Surface ☐ Quartz ☐

## Color

Name(s) \_\_\_\_\_

## Edge Profiles

Type(s) \_\_\_\_\_

## Backsplash

Yes ☐ No ☐

## Sink

Stainless Steel ☐ Quartz ☐ Porcelain ☐ Acrylic ☐

Sink Name \_\_\_\_\_

Color \_\_\_\_\_

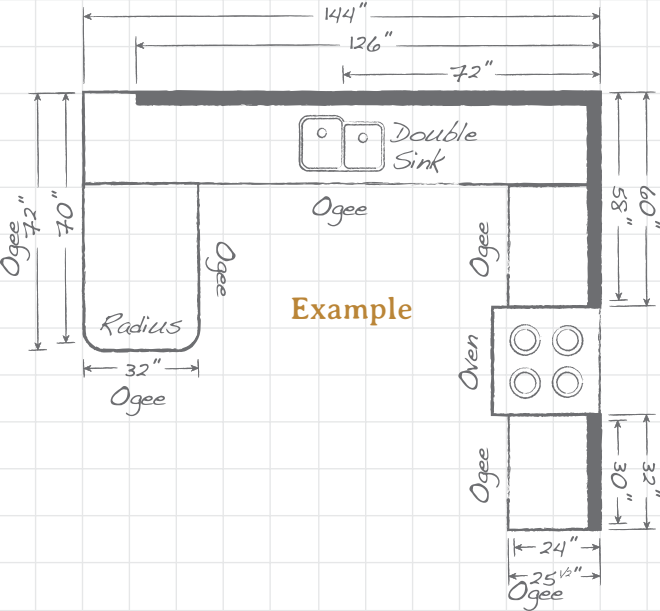
Other (Brand & Model) \_\_\_\_\_

## Appliances

Drop-in ☐ Freestanding ☐ Slide-in ☐

Brands \_\_\_\_\_

Models \_\_\_\_\_



# General Countertop Information

## How Is A Sink Or Appliance Cutout Determined?

During the manufacturing process, sink or appliance cutouts and anything under 24" is considered scrap. These would not be provided as they are a bi-product and contain additional tooling cuts to ensure top quality on all cuts on your countertop. The sink or appliance cutout is created by the sink or appliance vendor and is not something that CustomCraft Countertops® determines. When creating the sink or appliance cutout there is no remnant. CustomCraft Countertops® highly recommends that a template be ordered for all sinks/appliances that are not purchased from **MENARDS**®.

## Is Templating Necessary?

We recommend a template for all countertop orders. This is a process by which we will render a computerized template, print it full size and return it to you. You will then verify the template by laying it on your existing tops or cabinet run. If everything is correct you can approve your template on our website at midwestmanufacturing.com using the template approved tab or you can sign the approval letter sent with the template and mail it back to CustomCraft Countertops®. Once your template has been approved it will be placed into production and manufactured based on the specifications of your template. If corrections are needed, they should be noted on the template with changes and brought to the store where your order was placed. Please ask a **MENARDS**® Team Member for assistance.

## Quartz

### General Quartz Information

Quartz is made from pure, natural quartz. Variations in Quartz color, shape, shade, pattern, and size are unique traits of Quartz. Some Quartz colors may be more consistent than granite however color variance is an inherent trait expected in Quartz. In addition, small white blotches or random distribution of particles are an inherent part of the overall design and composition and are not considered to be defects under the size of a quarter.

- The thickness of quartz slabs is 2cm (.79") material used for backsplash and 3cm (1.18") material for countertop with an allowable variance of +/-2mm (.07").
- Quartz is made of 93% quartz and 7% binders, due to the high volume of natural stone used to manufacture the Quartz there can be some slight pitting that occurs – 1mm to 2mm in width and 1mm deep (about the size of a pinhead). This is an inherent characteristic of Quartz and in no way effects the performance of the material.
- Back splashes are cut from different slabs than countertops or vanities. Due to this, colors will be close but due to natural characteristics might not be an exact match.

### Care And Maintenance

Regular cleaning of Quartz countertops can be done using only a damp cloth and a mild household detergent. For best results, clean all spills as soon as possible. For tougher spots, use mild non-abrasive cleaners. Do NOT use Bleach.

### Preventing Damages

While Quartz is designed to withstand heat better than most countertop materials on the market it can be damaged by extreme temperature changes, whether sudden or prolonged. Always use a trivet or hot pad when placing hot items on your countertop surface. These items include, but are not limited to, pots, pans, or crock-pots.

- Never expose countertop surface to harsh chemicals, such as oven cleaners, drain cleaners, paint removers, acids, etc.
- Avoid cutting directly on Quartz countertops, always use a cutting board.

## Quartz Limited Lifetime Warranty

### Product Subject To This Limited Warranty

This Limited Warranty applies only to CustomCraft Countertops® Quartz (the "Product") sold by Midwest Manufacturing, a division of Menard, Inc., (the "Company").

### Who Is Entitled To This Limited Warranty

The company grants this Limited Warranty solely in favor of the original purchaser of the Product (the "Original Purchaser"), but to no other person or entity whatsoever. No person or entity, other than the Original Purchaser, shall have any right to assert any claim under this Limited Warranty, or otherwise, in connection with the Product.

This Limited Warranty is personal to the Original Purchaser and may not be transferred by the Original Purchaser to any other person or entity, by contract, operation of law, transfer of the property into which the Product are installed, or otherwise.

### Length Of This Limited Warranty

This Limited Warranty shall begin on the date of purchase of the Product and shall continue for a period of Lifetime (such period of time, the "Warranty Period"), after which this Limited Warranty shall expire and have no further force or effect.

### What Is Warranted

Subject to the conditions and limitations set forth in this Limited Warranty, the Company warrants to the Original Purchaser that during the Warranty Period the Product will be free from manufacturing and design defects when used under normal conditions and maintained properly. However, the Company shall not be liable under this Limited Warranty for any of the following:

- Defects in or failure of the product caused by accidents, physical abuse or misuse of the products.
- Defects in or failure of the product caused by installation of the product not in strict adherence with the written instructions of the company.
- Defects in or failure of the product caused by improper care or maintenance of the products.
- Breakage of the product that is not due to a defect in the manufacture of the products.
- Any damage to the product caused by impact of foreign objects, earthquake, or other acts of God or by fire, explosion or other casualty.
- Defects in, failure of, or damage to the product caused by materials adjacent to the product.
- Any damage due to or resulting from heat.
- Damage to the product caused by alteration after completion of its installation by anyone who is not authorized by the company in writing, whether such alteration be by structural additions, changes, replacements or by equipment installation.
- Changes in the product due to gloss reduction, scratching, staining or alkaline etching of the finish over time due to use, cleaning practices or water conditions, all of which are not manufacturing defects but are indicative of normal wear and tear.

THIS LIMITED WARRANTY IS IN LIEU OF ALL OTHER WARRANTIES, EXPRESS OR IMPLIED, INCLUDING BUT NOT LIMITED TO THE IMPLIED WARRANTIES OF FITNESS FOR A PARTICULAR PURPOSE AND MERCHANTABILITY. IN NO EVENT SHALL THE COMPANY BE LIABLE FOR CONSEQUENTIAL OR INCIDENTAL DAMAGES OF ANY KIND, INCLUDING, BUT NOT LIMITED TO, ANY DAMAGE TO THE PROPERTY IN WHICH A PRODUCT IS INSTALLED, ITS CONTENTS OR ANY PERSON THEREIN. NO FIELD REPRESENTATIVE, DISTRIBUTOR OR DEALER OF THE COMPANY IS AUTHORIZED TO MAKE ANY CHANGE OR MODIFICATION TO THIS LIMITED WARRANTY. THIS LIMITED WARRANTY GIVES YOU SPECIFIC LEGAL RIGHTS, AND YOU MAY ALSO HAVE OTHER RIGHTS THAT VARY FROM STATE TO STATE. SOME STATES DO NOT ALLOW LIMITATIONS ON HOW LONG AN IMPLIED WARRANTY LASTS OR THE EXCLUSION OR LIMITATION OF INCIDENTAL OR CONSEQUENTIAL DAMAGES, SO THE ABOVE LIMITATIONS OR EXCLUSIONS MAY NOT APPLY TO YOU.

The invalidity, illegality or unenforceability of any one or more provisions of this Limited Warranty shall in no way affect or impair the validity, legality or enforceability of the remaining provisions, which shall remain in full force and effect.

### What The Company Will Do

In the event that the Product fails to comply with this Limited Warranty, the Company shall replace the defective Product with a product of like kind and quality (the "Replacement Product"). THE EXPENSE OF LABOR, INSTALLATION, DELIVERY OR REMOVAL IS NOT

INCLUDED IN THIS LIMITED WARRANTY.

THE FOREGOING DESCRIBES THE COMPANY’S SOLE LIABILITY, AND THE ORIGINAL PURCHASER’S SOLE REMEDY, FOR ANY BREACH OF WARRANTY IN RESPECT OF THE PRODUCTS. AS LONG AS THE COMPANY IS WILLING OR ABLE TO REPAIR OR REPLACE THE DEFECTIVE PRODUCT, AS PROVIDED ABOVE, THIS LIMITED WARRANTY SHALL NOT BE DEEMED TO HAVE FAILED OF ITS ESSENTIAL PURPOSE.

### How To Make A Claim

To make a claim under this Limited Warranty, the Original Purchaser must notify the Company by submitting an Installed Guest Complaint Form (the "Form"). A copy of the Form can be obtained either online at **MENARDS.com**® or directly from your nearest **MENARDS**® home improvement store. The Original Purchaser must also submit a copy of the original proof of purchase that includes the date of purchase of the Product claimed to be defective along with photographs showing the claimed defect(s). The completed Form along with the copy of the original proof of purchase and photographs shall be mailed to:

Menards Guest Services

5101 Menard Drive

Eau Claire, WI 54703

The Company shall then promptly inspect, by means of the photographs supplied by the Original Purchaser, the claimed defect(s) and shall notify the Original Purchaser of its decision in writing. If the inspection does disclose a defect covered by this Limited Warranty, the Company shall provide the Original Purchaser with the Replacement Product. The Original Purchaser, at his or her own expense, will be required to return the defective Product when picking up the Replacement Product from the **MENARDS**® home improvement store of his or her choice.

### Dispute Resolution

Any controversies or claims arising out of or relating to this Limited Warranty, or the breach thereof, shall be settled by binding arbitration administered by the American Arbitration Association under its applicable Consumer or Commercial Arbitration Rules. The arbitration proceeding shall be held in Eau Claire, Wisconsin.

## Solid Surface Countertops

### Care And Maintenance

Regular cleaning of Solid Surface Countertops can be done using soap and water, mild cleansers, or ammonia based cleaners. Hard water marks can easily be removed using ordinary vinegar. Bleach should NOT be used.

Scratches are more noticeable in dark colors, but Solid Surface is completely renewable and repairable using the Solid Surface Refinishing Kit (item # 485-4283) found at your local **MENARDS**® store.

### Preventing Damages

While Solid Surface Countertops withstands heat better than most countertop materials on the market it can be damaged by extreme temperature changes, whether sudden or prolonged. Always use a trivet with rubber feet when placing hot items on your countertop surface. These items include, but are not limited to, pots, pans, or crock-pots.

- Avoid cutting directly on Solid Surface Countertops, always use a cutting board.

## Solid Surface Limited Warranty

### Product Subject To This Limited Warranty

This Limited Warranty applies only to CustomCraft Countertops® Solid Surface Countertops (the "Product") sold by Midwest Manufacturing, a division of Menard, Inc., (the "Company").

### Who Is Entitled To This Limited Warranty

The company grants this Limited Warranty solely in favor of the original purchaser of the Product (the "Original Purchaser"), but to no other person or entity whatsoever. No person or entity, other than the Original Purchaser, shall have any right to assert any claim under this Limited Warranty, or otherwise, in connection with the Product. This Limited Warranty is personal to the Original Purchaser and may not be transferred by the Original Purchaser to any other person or entity, by contract, operation of law, transfer of the property into which the Product are installed, or otherwise.

### Length Of This Limited Warranty

This Limited Warranty shall begin on the date of purchase of the Product and shall continue for a period of 15 years (such period of time, the "Warranty Period"), after which this Limited Warranty shall expire and have no further force or effect.

### What Is Warranted

Subject to the conditions and limitations set forth in this Limited Warranty, the Company warrants to the Original Purchaser that during the Warranty Period the Product will be free from manufacturing and design defects when used under normal conditions and maintained properly. However, the Company shall not be liable under this Limited Warranty for any of the following:

- Defects in or failure of the product caused by accidents, physical abuse or misuse of the products.
- Defects in or failure of the product caused by installation of the product not in strict adherence with the written instructions of the company.
- Defects in or failure of the Product caused by improper care or maintenance of the Products.
- Breakage of the product that is not due to a defect in the manufacture of the products.
- Any damage to the product caused by impact of foreign objects, earthquake, or other acts of God or by fire, explosion or other casualty.
- Defects in, failure of, or damage to the product caused by materials adjacent to the product.
- Any damage due to or resulting from heat.
- Damage to the product caused by alteration after completion of its installation by anyone who is not authorized by the company in writing, whether such alteration be by structural additions, changes, replacements or by equipment installation.
- Changes in the product due to gloss reduction, scratching, staining or alkaline etching of the finish over time due to use, cleaning practices or water conditions, all of which are not manufacturing defects but are indicative of normal wear and tear.

THIS LIMITED WARRANTY IS IN LIEU OF ALL OTHER WARRANTIES, EXPRESS OR IMPLIED, INCLUDING BUT NOT LIMITED TO THE IMPLIED WARRANTIES OF FITNESS FOR A PARTICULAR PURPOSE AND MERCHANTABILITY. IN NO EVENT SHALL THE COMPANY BE LIABLE FOR CONSEQUENTIAL OR INCIDENTAL DAMAGES OF ANY KIND, INCLUDING, BUT NOT LIMITED TO, ANY DAMAGE TO THE PROPERTY IN WHICH A PRODUCT IS INSTALLED, ITS CONTENTS OR ANY PERSON THEREIN. NO FIELD REPRESENTATIVE, DISTRIBUTOR OR DEALER OF THE COMPANY IS AUTHORIZED TO MAKE ANY CHANGE OR MODIFICATION TO THIS LIMITED WARRANTY. THIS LIMITED WARRANTY GIVES YOU SPECIFIC LEGAL RIGHTS, AND YOU MAY ALSO HAVE OTHER RIGHTS THAT VARY FROM STATE TO STATE. SOME STATES DO NOT ALLOW LIMITATIONS ON HOW LONG AN IMPLIED WARRANTY LASTS OR THE EXCLUSION OR LIMITATION OF INCIDENTAL OR CONSEQUENTIAL DAMAGES, SO THE ABOVE LIMITATIONS OR EXCLUSIONS MAY NOT APPLY TO YOU. The invalidity, illegality or unenforceability of any one or more provisions of this Limited Warranty shall in no way affect or impair the validity, legality or enforceability of the remaining provisions, which shall remain in full force and effect.

### What The Company Will Do

In the event that the Product fails to comply with this Limited Warranty, the Company shall replace the defective Product with a product of like kind and quality (the "Replacement Product"). THE EXPENSE OF LABOR, INSTALLATION, DELIVERY OR REMOVAL IS NOT INCLUDED IN THIS LIMITED WARRANTY.

THE FOREGOING DESCRIBES THE COMPANY’S SOLE LIABILITY, AND THE ORIGINAL PURCHASER’S SOLE REMEDY, FOR ANY BREACH OF WARRANTY IN RESPECT OF THE PRODUCTS. AS LONG AS THE COMPANY IS WILLING OR ABLE TO REPAIR OR REPLACE THE DEFECTIVE PRODUCT, AS PROVIDED ABOVE, THIS LIMITED WARRANTY SHALL NOT BE DEEMED TO HAVE FAILED OF ITS ESSENTIAL PURPOSE.

How To Make A Claim

To make a claim under this Limited Warranty, the Original Purchaser must notify the Company by submitting an Installed Guest Complaint Form (the "Form"). A copy of the Form can be obtained either online at [MENARDS.com](#) or directly from your nearest [MENARDS](#)\* home improvement store. The Original Purchaser must also submit a copy of the original proof of purchase that includes the date of purchase of the Product claimed to be defective along with photographs showing the claimed defect(s). The completed Form along with the copy of the original proof of purchase and photographs shall be mailed to:  
Menards Guest Services  
5101 Menard Drive  
Eau Claire, WI 54703  
The company shall then promptly inspect, by means of the photographs supplied by the Original Purchaser, the claimed defect(s) and shall notify the Original Purchaser of its decision in writing. If the inspection does disclose a defect covered by this Limited Warranty, the Company shall provide the Original Purchaser with the Replacement Product. The Original Purchaser, at his or her own expense, will be required to return the defective Product when picking up the Replacement Product from the [MENARDS](#)\* home improvement store of his or her choice.

Dispute Resolution

Any controversies or claims arising out of or relating to this Limited Warranty, or the breach thereof, shall be settled by binding arbitration administered by the American Arbitration Association under its applicable Consumer or Commercial Arbitration Rules. The arbitration proceeding shall be held in Eau Claire, Wisconsin.

Standard and High Resolution Laminate Countertops

Care And Maintenance

Wash the surface with mild dish washing liquid or powdered detergent; add warm water. Use a soft dish cloth. Rinse with warm water and dry with cloth. Water is generally all that is needed. A quick wipe will clean most stains. For harder-to-remove spots, use an all-purpose cleaner or bathroom cleanser. Follow the manufacturer's instructions. Rinse with warm water and dry with a soft cloth. (NOTE: Do not use cleaners that contain harsh acids or abrasives, like bleach.)  
For stubborn spots, make a paste with baking soda and water. The paste will be slightly abrasive. Work carefully to keep from damaging the surface you are cleaning. Dip a soft bristle brush into the paste to cover the bristles. Gently rub the spot with the brush, moving in a circular motion and pressing very lightly. You may also use a Magic Eraser® stain remover following the manufacturer's instructions for stubborn stains.

Preventing Damages

Extreme heat can permanently damage laminate countertops, always use a trivet or hot pad when placing hot items on your countertop surface. These items include, but are not limited to, pots, pans, or crock-pots.

- Avoid cutting directly on countertops, always use a cutting board.

Standard And High Resolution Laminate Limited Warranty

Product Subject To This Limited Warranty

This Limited Warranty applies only to the CustomCraft Countertops® Laminate (the "Product") sold by Midwest Manufacturing, a division of Menard, Inc., (the "Company").

Who Is Entitled To This Limited Warranty

The Company grants this Limited Warranty solely in favor of the original purchaser of the Product (the "Original Purchaser"), but to no other person or entity whatsoever. No person or entity, other than the Original Purchaser, shall have any right to assert any claim under this Limited Warranty, or otherwise, in connection with the Product.  
This Limited Warranty is personal to the Original Purchaser and may not be transferred by the Original Purchaser to any other person or entity, by contract, operation of law, transfer of the property into which the Product are installed, or otherwise.

Length Of This Limited Warranty

This Limited Warranty shall begin on the date of purchase of the Product and shall continue for a period of 1 year (such period of time, the "Warranty Period"), after which this Limited Warranty shall expire and have no further forced or effect.

What Is Warranted

Subject to the conditions and limitations set forth in this Limited Warranty, the Company warrants to the Original Purchaser that during the Warranty Period the Product will be free from manufacturing and design defects when used under normal conditions and maintained properly. However, the Company shall not be liable under this Limited Warranty for any of the following:

- A. Defects in or failure of the product caused by accidents, physical abuse or misuse of the products.
- B. Defects in or failure of the product caused by installation of the product not in strict adherence with the written instructions of the company.
- C. Defects in or failure of the product caused by improper care or maintenance of the products.
- D. Breakage of the product that is not due to a defect in the manufacture of the products.
- E. Any damage to the product caused by impact of foreign objects, earthquake, or other acts of God or by fire, explosion or other casualty.
- F. Defects in, failure of, or damage to the product caused by materials adjacent to the product.
- G. Any damage due to or resulting from heat.
- H. Damage to the product caused by alteration after completion of its installation by anyone who is not authorized by the company in writing, whether such alteration be by structural additions, changes, replacements or by equipment installation.
- I. Changes in the product due to gloss reduction, scratching, staining or alkaline etching of the finish over time due to use, cleaning practices or water conditions, all of which are not manufacturing defects but are indicative of normal wear and tear.

THIS LIMITED WARRANTY IS IN LIEU OF ALL OTHER WARRANTIES, EXPRESS OR IMPLIED, INCLUDING BUT NOT LIMITED TO THE IMPLIED WARRANTIES OF FITNESS FOR A PARTICULAR PURPOSE AND MERCHANTABILITY. IN NO EVENT SHALL THE COMPANY BE LIABLE FOR CONSEQUENTIAL OR INCIDENTAL DAMAGES OF ANY KIND, INCLUDING, BUT NOT LIMITED TO, ANY DAMAGE TO THE PROPERTY IN WHICH A PRODUCT IS INSTALLED, ITS CONTENTS OR ANY PERSON THEREIN. NO FIELD REPRESENTATIVE, DISTRIBUTOR OR DEALER OF THE COMPANY IS AUTHORIZED TO MAKE ANY CHANGE OR MODIFICATION TO THIS LIMITED WARRANTY. THIS LIMITED WARRANTY GIVES YOU SPECIFIC LEGAL RIGHTS, AND YOU MAY ALSO HAVE OTHER RIGHTS THAT VARY FROM STATE TO STATE. SOME STATES DO NOT ALLOW LIMITATIONS ON HOW LONG AN IMPLIED WARRANTY LASTS OR THE EXCLUSION OR LIMITATION OF INCIDENTAL OR CONSEQUENTIAL DAMAGES, SO THE ABOVE LIMITATIONS OR EXCLUSIONS MAY NOT APPLY TO YOU. The invalidity, illegality or unenforceability of any one or more provisions of this Limited Warranty shall in no way affect or impair the validity, legality or enforceability of the remaining provisions, which shall remain in full force and effect.

What The Company Will Do

In the event that the Product fails to comply with this Limited Warranty, the Company shall replace the defective Product with a product of like kind and quality (the "Replacement Product"). THE EXPENSE OF LABOR, INSTALLATION, DELIVERY OR REMOVAL IS NOT INCLUDED IN THIS LIMITED WARRANTY. THE FOREGOING DESCRIBES THE COMPANY'S SOLE LIABILITY, AND THE ORIGINAL PURCHASER'S SOLE REMEDY, FOR ANY BREACH OF WARRANTY IN RESPECT OF THE PRODUCTS. AS LONG AS THE COMPANY IS WILLING OR ABLE TO REPAIR OR REPLACE THE DEFECTIVE PRODUCT, AS PROVIDED ABOVE, THIS LIMITED WARRANTY SHALL NOT BE DEEMED TO HAVE FAILED OF ITS ESSENTIAL PURPOSE.

How To Make A Claim

To make a claim under this Limited Warranty, the Original Purchaser must notify the Company by submitting an Installed Guest Complaint Form (the "Form"). A copy of the Form can be obtained either online at [MENARDS.com](#) or directly from your nearest [MENARDS](#)\* home improvement store. The Original Purchaser must also submit a copy of the original proof of purchase that includes the date of purchase of the Product claimed to be defective along with photographs showing the claimed defect(s). The completed Form along with the copy of the original proof of purchase and photographs shall be mailed to:  
Menards Guest Services  
5101 Menard Drive  
Eau Claire, WI 54703  
The company shall then promptly inspect, by means of the photographs supplied by the Original Purchaser, the claimed defect(s) and shall notify the Original Purchaser of its decision in writing. If the inspection does disclose a defect covered by this Limited Warranty, the Company shall provide the Original Purchaser with the Replacement Product. The Original Purchaser, at his or her own expense, will be required to return the defective Product when picking up the Replacement Product from the [MENARDS](#)\* home improvement store of his or her choice.

Dispute Resolution

Any controversies or claims arising out of or relating to this Limited Warranty, or the breach thereof, shall be settled by binding arbitration administered by the American Arbitration Association under its applicable Consumer or Commercial Arbitration Rules. The arbitration proceeding shall be held in Eau Claire, Wisconsin.

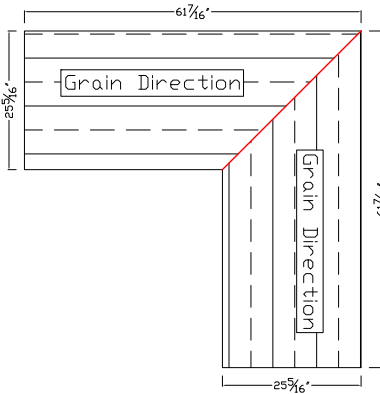
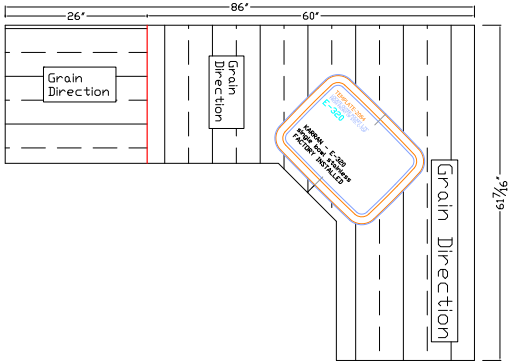
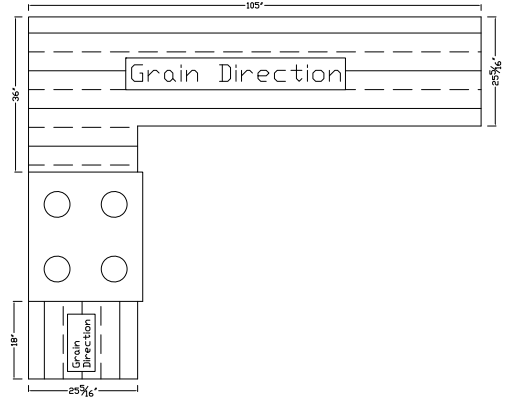
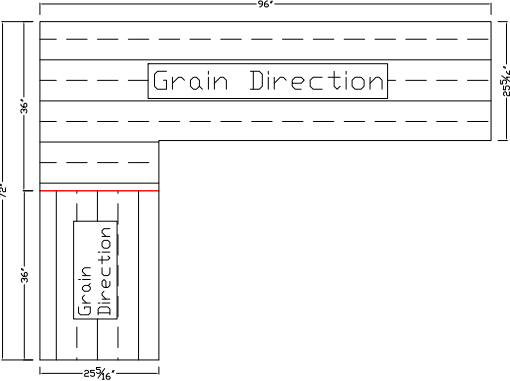
Factory Integrated Undermount Sinks

A small shadowing or halo effect may be visible around the outside of a factory installed undermount sink in laminate. This halo is not a defect, but rather an inherent trait of the installation. This ring may be most noticeable on darker and matte colors of laminate, but will not affect the performance of the countertop.

Grain Direction

Due to the unique patterns in laminate, seams may not always match in pattern or grain. Patterns with larger repeats will create variances within the countertop where they meet on joints and miters. In addition, pattern may vary from piece to piece within an order. Seamless corners have a maximum sheet size of 60"; any size over this will require a field seam. Some of the more common grain direction mismatches are shown below. In these instances, it is recommended to use a non-directional pattern, with smaller repeats for these applications.

Examples



# Designed With Living In Mind™

For everything  
CustomCraft Countertops®  
has to offer, visit  
[customcraftcountertops.com](https://customcraftcountertops.com)

- Brochures
- Videos
- Installation instructions
- Warranty information
- Features and benefits guides
- Inspirational images

Scan the QR Code to visit our site.



## Questions or Concerns

For guest assistance, leave us a message on  
our LiveChat at [customcraftcountertops.com](https://customcraftcountertops.com)

Available Exclusively At  
**MENARDS®**

Copyright 2022 Midwest Manufacturing  
All Rights Reserved



Printed and digital representation may vary  
from product. Please see actual sample for  
more accurate color and composition.

